



JOBS Initiative for Wisconsin Public Libraries

Barb Huntington
Special Services and Youth Consultant

barbara.huntington@dpi.wi.gov
(608) 267-5077

Division for Libraries, Technology,
and Community Learning

Wisconsin Department of Public Instruction

Project Compass Summit
Portland, Oregon
March 22-24, 2010





Wisconsin Public Library Systems

Initial Goal

To help regional systems respond quickly with financial support for the efforts of their member libraries as they scrambled to respond to their local employment crisis.





Ongoing Goals

- Financial support of library efforts
- Web resources of in-state activities related to JOBS Initiative
<http://dpi.wi.gov/pld/lstajobs.html>
- Foster in-state discussion of JOBS related activities and issues using a group list
- Facilitate training efforts
- Coordinate state-wide collaborations with other state agencies





LSTA JOBS Webpage

<http://dpi.wi.gov/pld/lstajobs.html>



The screenshot shows the Wisconsin Department of Public Instruction website. At the top is the logo for the Wisconsin Department of Public Instruction. Below it is a navigation bar with links for Home, News, Visitor, Data, and Topics, along with a search box. The main content area is titled "LSTA JOBS Category" and features a "JOBS start at your library" logo. The text describes the LSTA category in 2009 and 2010, highlighting the funding and the types of projects supported. A sidebar on the left contains a "DPI Menu" and "Public Library Development" sections. On the right, there are links to project summaries, abstracts, and information for 2010.

WISCONSIN DEPARTMENT OF PUBLIC INSTRUCTION

Home News Visitor Data Topics Search

LSTA JOBS Category

JOBS start at your library

JOBS - For Help, Start at Your Public Library

In an effort to assist the public library community in responding to the economic situation that has affected families and individuals across the state, DLTCI initiated a LSTA category in 2009 called "JOBS-Searching, Training, and Support." In 2009 this funding was made available on an emergency basis to the 17 regional public library systems in a non-competitive category. Funding was distributed on a population formula. This year, 2010, the category was competitive and open to both public libraries and systems.

The Systems use the funding to address a variety of needs. A summary of the overall 2009 project was included in a Channel article on the JOBS category. A link to the article appears in the box to the right on this page. Links are also included for the 2010 JOBS Project Summaries and current project abstracts. There is a link to the 2010 LSTA information, as well as one for the DWD Unemployment Figures by County for the State of Wisconsin.

Additional information about what public libraries are doing to help people looking for jobs is included below.

Wisconsin Library Agency Employment Help Web Sites

These Wisconsin library systems have created web pages for people who are looking for jobs.

Arrowhead: <http://als.lib.wi.us/ALS/jobs.html>
Eastern Shores: www.esls.lib.wi.us/unemployment_resources.htm

DPI Menu

- Superintendent's Page
- Divisions & Teams
- Directories
- Ask?Away

Public Library Development

- PLD Homepage
- BadgerLink
- Certification
- Legislation, funding
- Library Statistics
- LSTA
- Publications
- Special Needs
- PLD Staff Contacts
- Technology
- Trustee Resources
- WI Library Directory
- WISPUBLIB
- Youth Services

Overview of the 2009 JOBS Projects
<http://dpi.wi.gov/channel/pdf/chn4404.pdf>

2010 JOBS Projects Summaries
http://dpi.wi.gov/pld/pdf/10jobs_summaries.pdf
or Choose an administrative agency: [dropdown]

2010 JOBS Project Abstracts
Wisconsin 2010 LSTA Grant Abstracts, pages 30-37.
<http://dpi.wi.gov/pld/pdf/10abstracts.pdf#page=30>

2010 LSTA Information
<http://dpi.wi.gov/pld/pdf/guide10.pdf>

Unemployment Figures by County for the State of Wisconsin
http://dwd.wisconsin.gov/dwd/newsreleases/ui_local_default.pdf





2009 – \$200,000 in Emergency LSTA Funding

- Non-competitive grants
- Given only to 17 regional systems
- Distribution formula based on population

2010 – \$214,190 for New LSTA JOBS Category

- 12 competitive grants funded
- Individual libraries and regional systems
- In 2010, 56% of all Wisconsin public libraries are providing job services using LSTA JOBS funding.
- Additional libraries are providing job services without LSTA funding.

2011 and Beyond

- Continue competitive grant category as needed
- Continuation projects accepted
- Annually assess need, based on national and state economy

“Things will not necessarily get better for workers who are unemployed, even if the general economy improves. Many workers who have lost their jobs lack the skills they need for 21st century jobs.” –Arrowhead LSTA application, Janesville





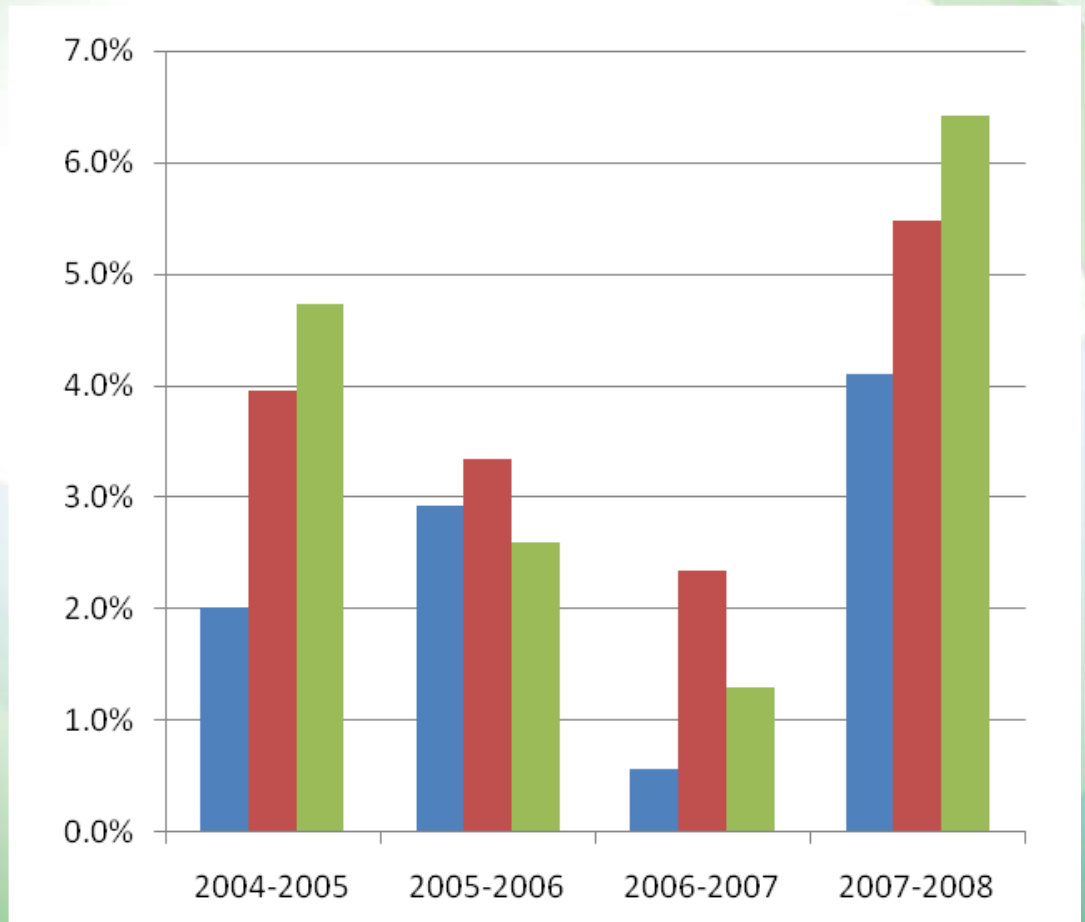
Partnering Agencies

- Some collaboration at state level between Department of Workforce Development, Second Harvest Food Bank, SNAP (Wisconsin's Supplemental Nutrition Assistance Program), and DLTCL
- Local and regional partners
 - Job Service Centers, all 17 projects have some interaction with their area Job Service Centers and Workforce Development/Investment Boards
 - Social Service Agencies (Goodwill, LEAVEN Guesthouse transitional housing, La Casa de Esperanza, UMOS)
 - Technical Colleges (8)
 - Universities (4)
 - High Schools
 - Wisconsin Farm Center
 - Chamber of Commerce, Community Action Program (CAP), Community Centers
 - Community Foundation
 - Small Business Centers and Wisconsin Women's Business Initiative Corporation





Annual Percentage Increase of Selected Library Services 2004-08



- Total Circulation
- Total Programs
- Total Attendance





Community Economic Challenges

- 600 jobs were lost when the paper mill in Kimberly closed.
—Appleton Public Library 2010 LSTA application
- 60% of the dislocated workers in this community do not have computer skills.—Arrowhead 2010 LSTA application
- If the unemployment figure included workers who are too discouraged to look and those who took part-time jobs, the unemployment rate for the city would be 20%.
—Milwaukee Public Library 2010 LSTA application
- Ashland and Iron counties have double-digit unemployment rates at 10.4% and 11.4%.—Northern Waters 2010 LSTA application
- Farmers are not eligible for unemployment compensation.
—Southwest 2010 LSTA application





Other Economic Indicators

- Local charities are experiencing record client use, and the food pantry had a 28% increase from 2008 to 2009.
–Appleton Public Library Application
- Almost a quarter of residents in the City of Milwaukee live in poverty; 21% do not have a high school diploma.
–Milwaukee Public Library LSTA application
- There is significant under-employment for the workers who do have jobs. –Manitowoc-Calumet LSTA application
- Farmers were hit particularly hard by the economy. They are experiencing historically low prices for their products and rapidly increasing costs for production.
–Southwest 2010 LSTA application
- Many full-time farmers are looking for employment off the farm to supplement their income. –Southwest 2010 LSTA application





Things Won't be Getting Much Better Even when the Economy Improves

- Even when the economy improves, the workers who are unemployed will still face challenges. The manufacturing plants lost or relocated overseas or in other states are not going to re-open.—Southwest 2010 LSTA application
- The workforce is skilled in industrial trades and agriculture, not in information technology.—Manitowoc-Calumet LSTA application
- Farmers who lose their farms will not be able to start over in farming because of the high start-up costs involved.—Southwest 2010 LSTA application
- “...The economy has tipped the scales and we are purchasing material with a different mindset. While we haven't lost our balance, we've placed a greater emphasis on materials related to jobs, small business growth, education, and literacy....”
—Paula Kiely, Director, Milwaukee Public Library, *Milwaukee Public Library Reader*, March 2010





Sampling of Anticipated Outcomes for LSTA Projects

- “Our goal was to have at least 120 workers in our employment classes during 2010. We have already trained 410 people so far, and it’s just the end of February.”
–Arrowhead Library System update on project February 2010
- Three months after people use the drop-in center, a post card will be sent to the participants asking if they have found a job or reached other employment goals. –Madison Public Library
- It’s anticipated LearningExpress will be used at least 1000 times. –South Central 2010 LSTA application
- Department of Workforce Development will meet with at least 4 clients each month at each public library location.
–Northern Waters 2010 LSTA application

