

# Series Learner Guide

- Use on your own or with others, to extend your learning on the topic
- Tool for bringing this work to your library practice
- Increase motivation and set attainable goals
- Connect your learning to practical application
- Customize with your own questions!



## The triple bottom line

The Sustainable Libraries Initiative (SLI) was formed to help library leaders reimagine their work in order to leverage their influence to help communities be more sustainable, resilient, and regenerative.

Climate change is not just an environmental issue. It is closely tied to our economic choices and has deep roots in issues related to equity, diversity, inclusion, and justice. It is a systemic problem that requires solutions that take into consideration the intersections of our everyday decisions.

To this end, the American Library Association and the Sustainable Libraries Initiative have adopted the “triple bottom line” framework to provide clarity in the desired outcome for a word that is commonly used in many instances. This framework seeks balance at the nexus of environmental stewardship, social equity, and economic feasibility. The framework can be scaled for decisions large and small in a library setting as well as for defining the sustainability of an organization, product, or community.



*Image Source: Sustainable Libraries Initiative*

## REFLECTION

To be truly sustainable, an organization must embody practices that are environmentally sound AND economically feasible AND socially equitable.

**Why are these three practices of sustainability important to a community?**

**Why are these three practices of sustainability important to a library?**

# Sustainable Libraries: Resources and Webinars for Climate Action



**Sustainable  
Libraries  
Initiative**



New Sustainability topic area: [www.webjunction.org/explore-topics/sustainability.html](http://www.webjunction.org/explore-topics/sustainability.html)



# Today's Presenters



**Rebekkah Smith Aldrich**

Executive Director, Mid-Hudson Library System (NY), Co-founder/Current President, Sustainable Libraries Initiative, and Author



**Jenny Garmon**

Civic Engagement Specialist, Kansas City Public Library (MO)



**Gabrielle Griffis**

Assistant Youth Services Librarian, Brewster Ladies' Library & Blue Marble Librarian (MA)



**M'Balu "Lu" Bangura**

Chief of Equity and Fair Practice at the Enoch Pratt Free Library & Maryland State Library Resource Center

# Stronger Together:

## Collective Impact and Climate Action Programming

**Sustainable Libraries: Resources and Webinars for Climate Action**

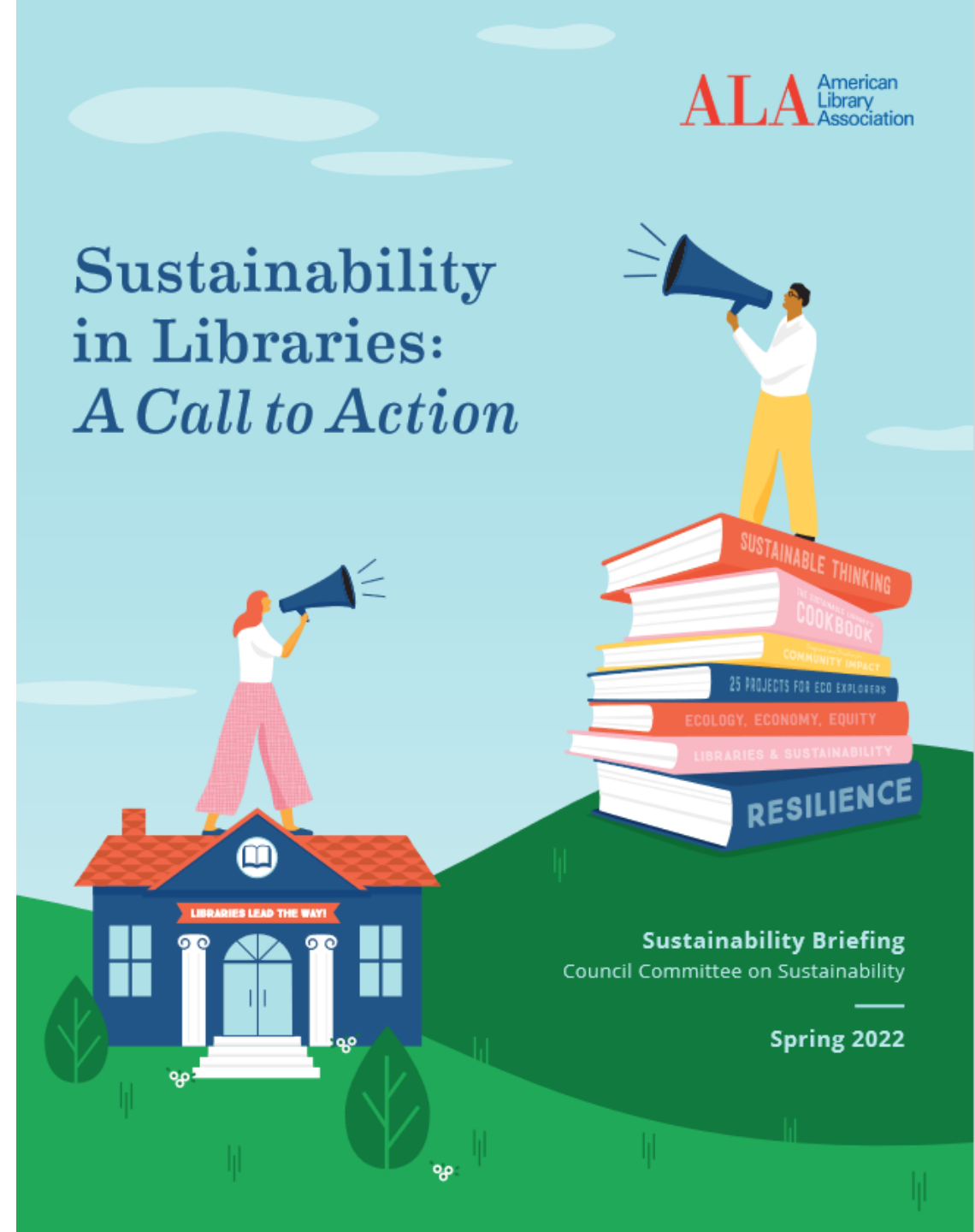
Moderated by Rebekkah Smith Aldrich





Image Source: National Centers for Environmental Information, NOAA

“**Climate change** is the single greatest threat to global health, a “**code red for humanity**,” and is this generation’s **grandest challenge**.”



ALA American Library Association

## Sustainability in Libraries: *A Call to Action*



Sustainability Briefing  
Council Committee on Sustainability  
Spring 2022

# Characteristics of Sustainable Libraries

- ✓ **Strong & Authentic Institutions that Live Their Values Out Loud**
- ✓ Catalyst for **Social Cohesion & Civic Participation** in Communities
- ✓ Working on **Climate Mitigation** (reducing Greenhouse Gas Emissions - GHG)
- ✓ Active Participants in **Climate Adaptation** (strengthening community resilience)

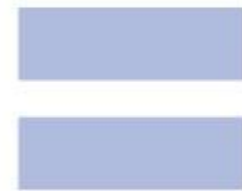


**Sustainable  
Libraries  
Initiative**

# Definitions

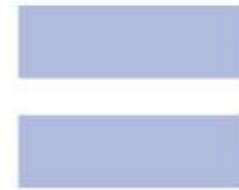






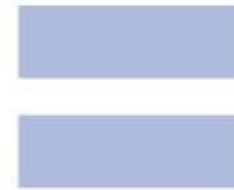
**Sustainable  
Libraries  
Initiative**

*→ Reduce Greenhouse Gas Emissions*



**Sustainable  
Libraries  
Initiative**

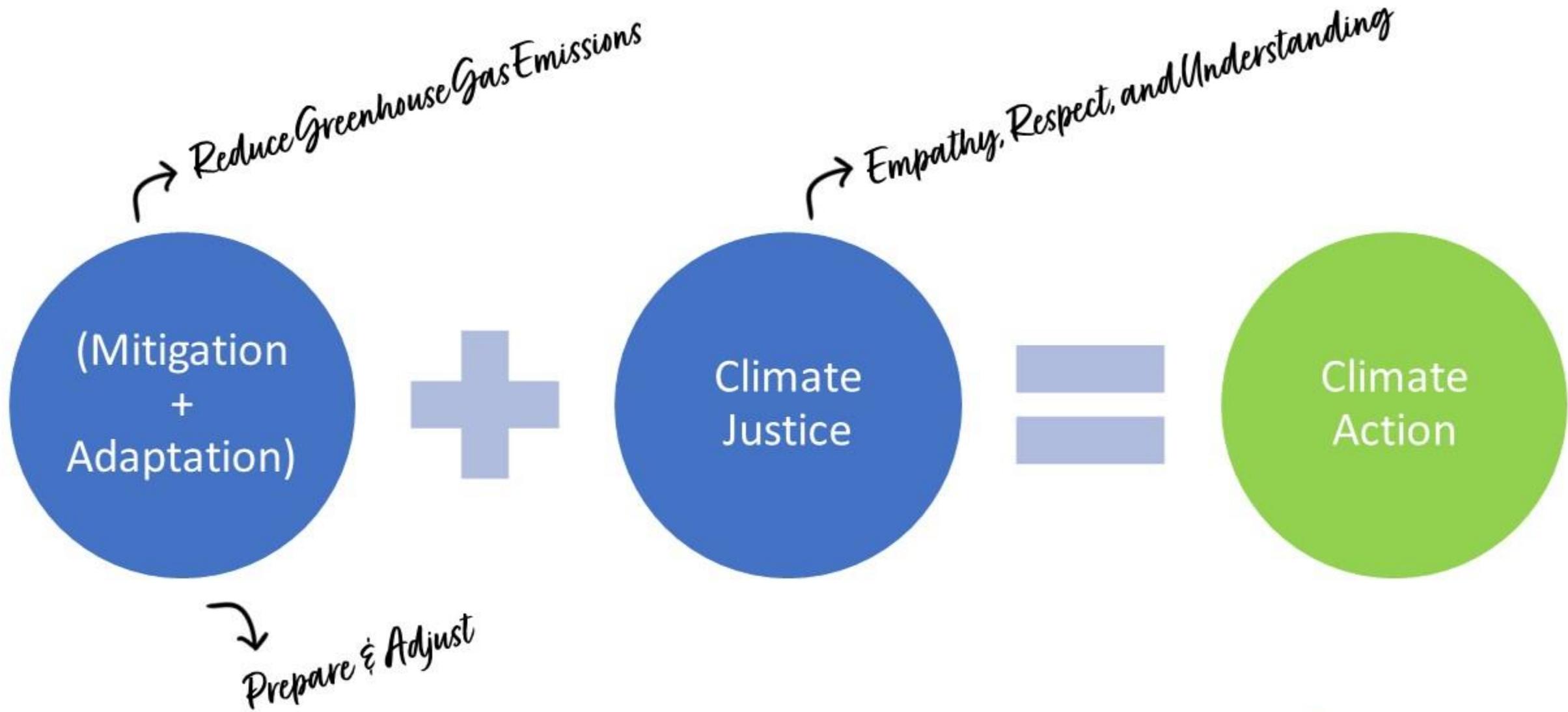
*→ Reduce Greenhouse Gas Emissions*



*↘ Prepare & Adjust*

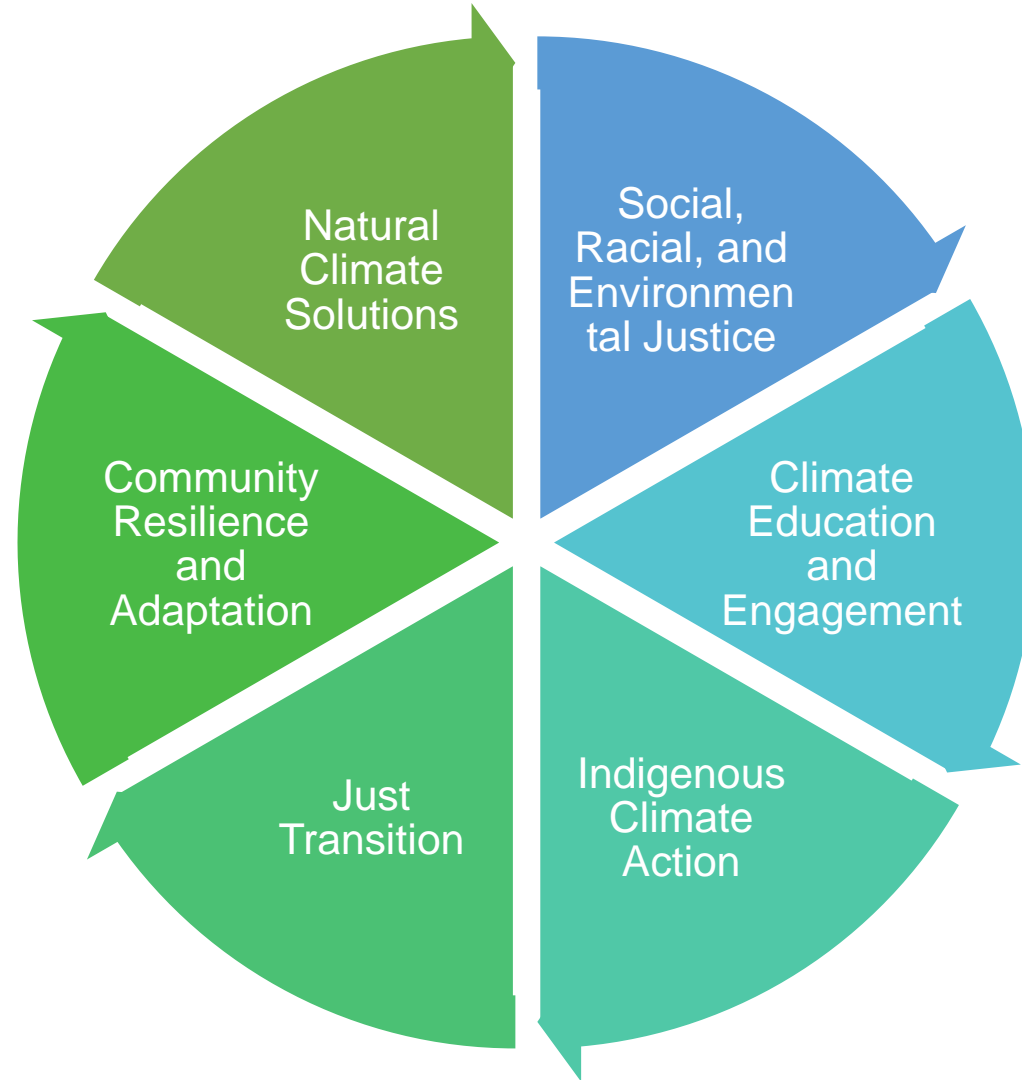


**Sustainable  
Libraries  
Initiative**



**Sustainable  
Libraries  
Initiative**

# “The Six Pillars”



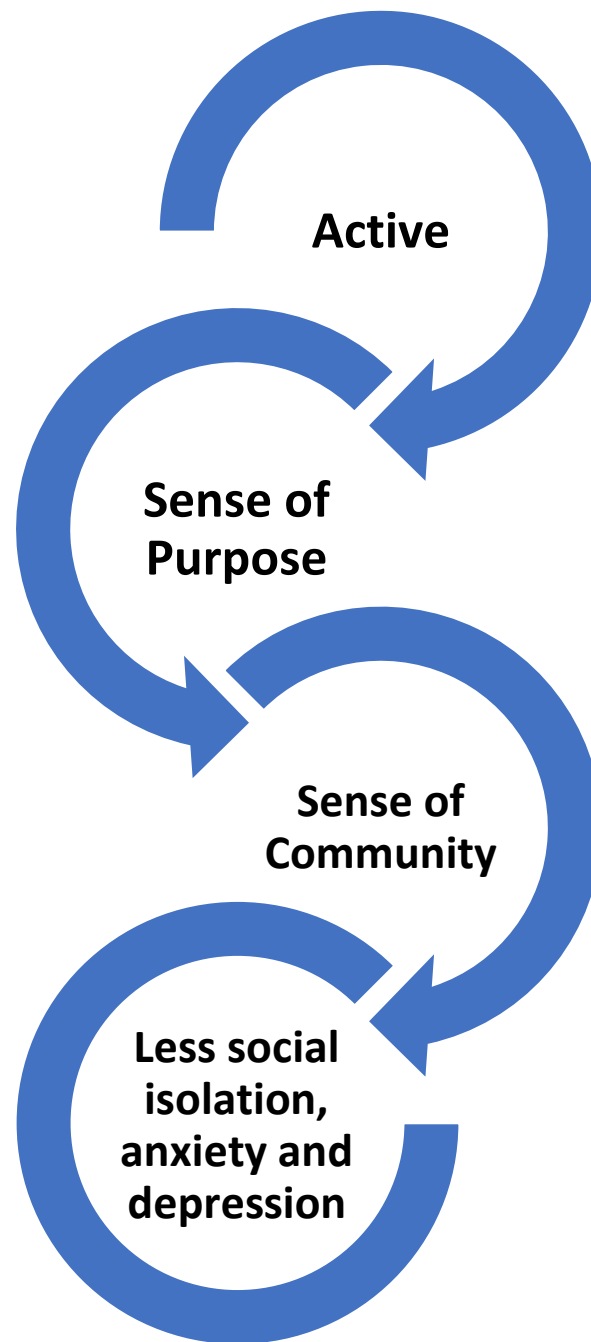
# Social Cohesion & Civic Participation

## Social Cohesion:

Respect, Empathy, and Understanding  
Strength of Relationships  
Sense of Solidarity  
Social Capital through Social Networks

## Civic Participation:

Voting  
Volunteering  
Participating in Group Activities  
Community Gardening



<https://health.gov/healthypeople>

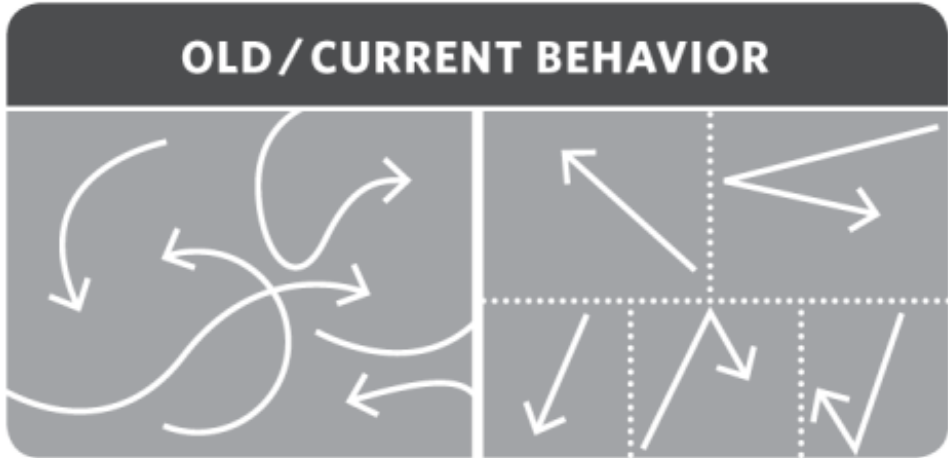


**Sustainable  
Libraries  
Initiative**



# CENTER FOR THE FUTURE OF LIBRARIES

ALA American Library Association



DISORDER & CONFUSION

ISOLATION



ALIGNMENT

COLLECTIVE IMPACT

Graphic: AllHandsRaised.org

**Collective Impact**

By John Kania & Mark Kramer

Stanford Social Innovation Review  
Winter 2011

Copyright © 2011 by Leland Stanford Jr. University  
All Rights Reserved

“...large-scale social change comes from **better cross-sector coordination** rather than from the isolated intervention of individual organizations.”



# Today's Panelists



**M'Balu "Lu" Bangur,**  
Chief of Equity and Fair Practice,  
Enoch Pratt Free Library & Maryland  
State Library Resource Center



**Jenny Garmon,**  
Civic Engagement Specialist,  
Kansas City Public Library (MO)



**Gabrielle Griffis,**  
Assistant Youth Services Librarian,  
Brewster Ladies' Library & Blue Marble  
Librarian (MA)

# Gabrielle Griffis

Assistant Youth Services Librarian, Brewster Ladies' Library & Blue Marble Librarian (MA)





PHOTOS COURTESY OF FIXIT CLINIC FOUNDER, PETER MUI



REPAIR EVENTS ARE INTERGENERATIONAL PROGRAMS IN WHICH PEOPLE BRING BROKEN THINGS TO THE EVENT TO BE GUIDED BY A VOLUNTEER WITH FIXING SKILLS TO HOPEFULLY FIX THEIR BROKEN ITEMS AND KEEP THEM OUT OF THE LANDFILL.



IN PARTNERSHIP WITH THE BREWSTER RECYCLING COMMISSION

# FIXIT CLINIC



FIXIT CLINIC



SATURDAY, MARCH 11TH [AT] 1-4PM

DO YOU HAVE BROKEN STUFF? JOIN US FOR A FREE ALL-AGES REPAIR ACTIVITY TO TRY & FIX YOUR BROKEN THINGS RATHER THAN THROW THEM "AWAY." WE'LL PROVIDE THE WORKSPACE, TOOLS, & GUIDANCE BY A FIXIT COACH WHO WILL HELP YOU DISASSEMBLE, TROUBLESHOOT, & MAYBE EVEN FIX YOUR BROKEN STUFF!

EXAMPLES OF ITEMS: HOUSEHOLD APPLIANCES, CLOTHING & FABRIC, SEWING MACHINES, LAMPS, ELECTRONICS, TOYS & WOODEN ITEMS, JEWELRY.

REGISTRATION REQUIRED AT:  
[BREWSTERLADIESLIBRARY.ORG](http://BREWSTERLADIESLIBRARY.ORG)



BREWSTER LADIES' LIBRARY  
1822 MAIN ST., BREWSTER MA 02631

# REPAIR AROUND THE WORLD....



ASHEVILLE  
**TOOL**  
LIBRARY

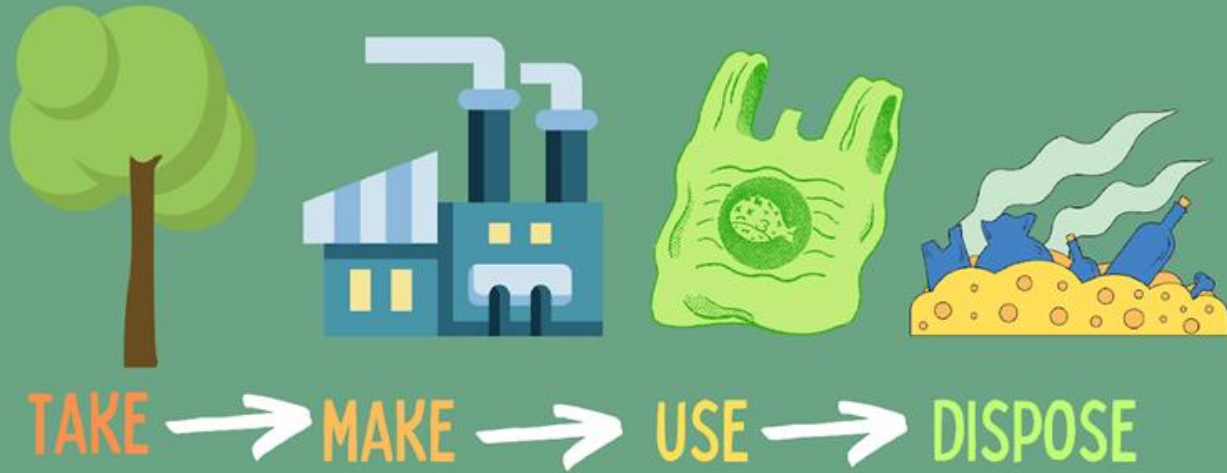


# REPAIR EVENTS EMBODY TRIPLE-BOTTOM LINE

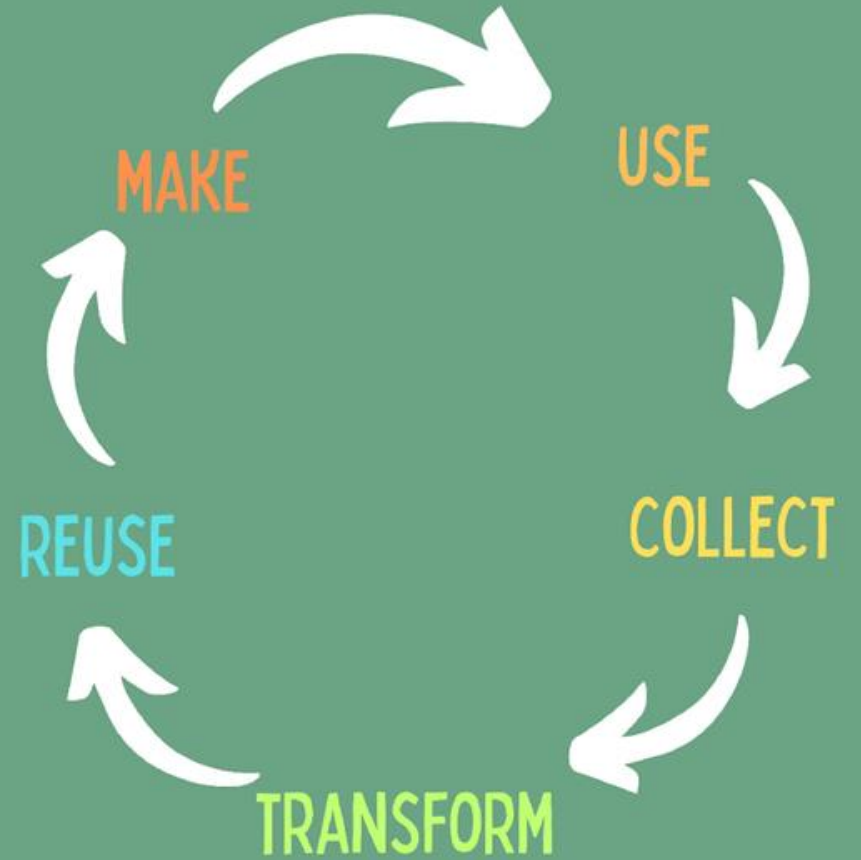


REPAIR EVENTS PROMOTE A CULTURAL AND PARADIGM SHIFT FROM VIEWS AND PRACTICES THAT TREAT OBJECTS, PEOPLE, AND THEIR ENVIRONMENTS AS DISPOSABLE TO INHERENTLY VALUABLE AND REPAIRABLE.

# DOUGHNUT ECONOMICS

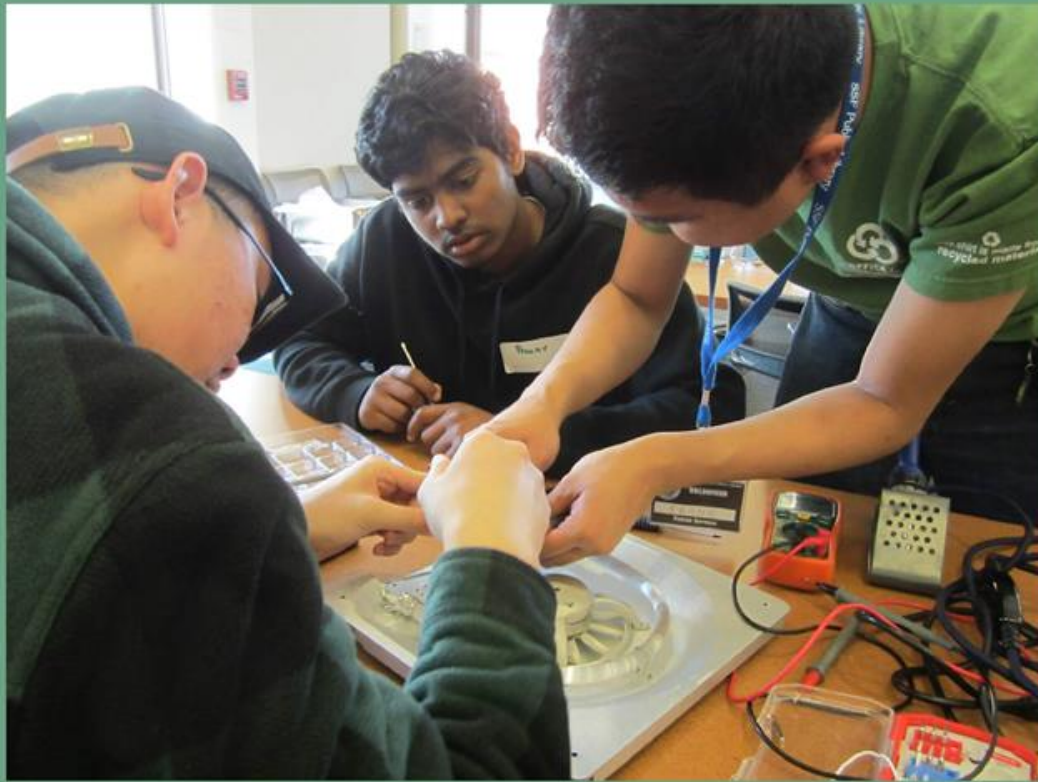


LINEAR ECONOMY



CIRCULAR ECONOMY

# TEACH LIFE LONG-FIXING SKILLS



A MAJOR GOAL OF REPAIR EVENTS IS TO EMPOWER AND TEACH LIFELONG FIXING SKILLS BY HAVING PARTICIPANTS DO THE WORK WITH THE GUIDANCE OF A REPAIR EXPERT.



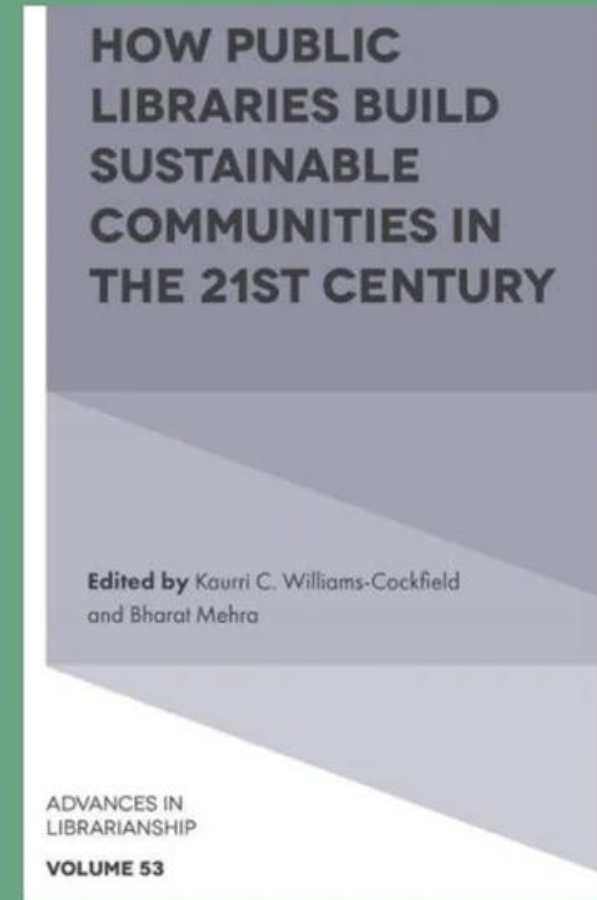
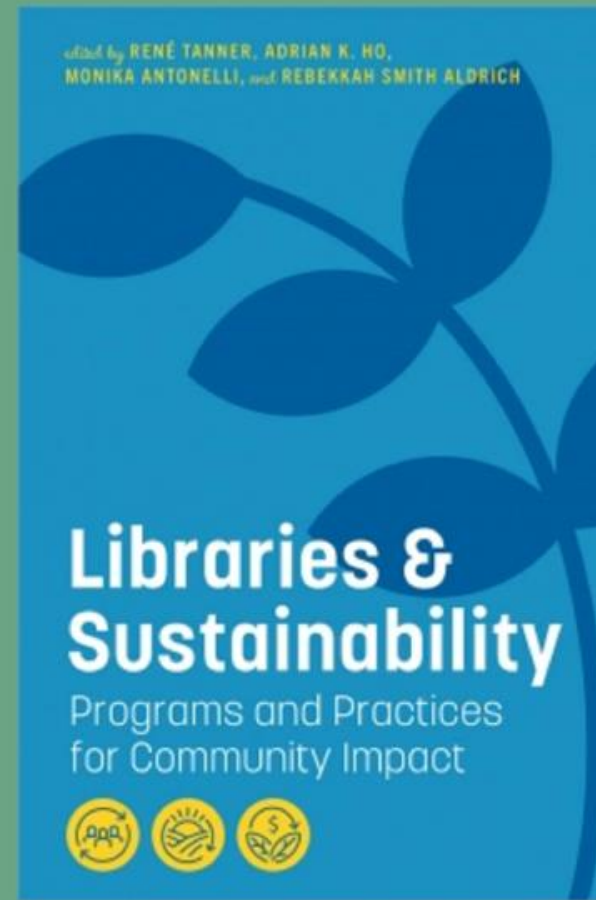
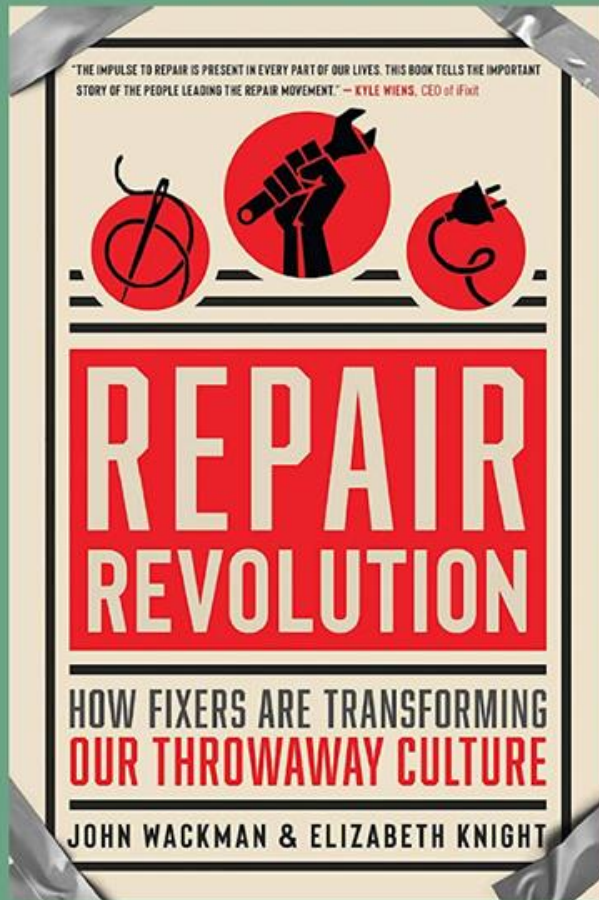
PHOTO CREDIT: PETER MUI, 10.5.2019, FIXIT CLINIC, PACIFICA SANCHEZ LIBRARY

# OUTCOMES OF REPAIR EVENTS

- LIFE-LONG FIXING SKILLS
- COMMUNITY BUILDING
- CREATING SUSTAINABLE CULTURE: VALUE BASED ON HEALTH & HAPPINESS OF PEOPLE & ECOLOGY (NOT GDP)
- CONNECTING PATRONS TO RESOURCES



# BOOKS ON SUSTAINABILITY AND REPAIR



REPAIR EVENTS START CONVERSATIONS ABOUT STEWARDSHIP AND SUSTAINABILITY, AS WELL AS INSPIRE CULTURAL CHANGE AT A GRASSROOTS LEVEL. LIBRARIES, AS PLACES FOR INFORMATION ACCESS AND COMMUNITY OUTREACH, ARE PERFECTLY POSITIONED TO CREATE A SPACE WHERE NEIGHBORS CAN CONNECT WITH ONE ANOTHER TO ENVISION AND CREATE A BRIGHTER AND SUSTAINABLE FUTURE. THIS MEANS IMAGINING SYSTEMS AND INFRASTRUCTURE THAT ARE NOT DESIGNED FOR PROFIT AT THE COST OF HUMAN AND ENVIRONMENTAL WELLBEING, BUT RATHER, COMMUNITIES AND NEIGHBORHOODS WHERE PEOPLE WORK TOGETHER, CARE FOR EACH OTHER, AND MEND THAT WHICH IS BROKEN.



REUSABLE UPCYCLED BAGS MADE OF POST  
CONSUMER FABRIC SEWN BY VOLUNTEERS AND  
DISTRIBUTED FOR FREE TO LIBRARY PATRONS.

# BOOMERANG BAGS SEWING BEE

HELP REDUCE PLASTIC POLLUTION

FRI. AUG 18TH 1-4PM

PLEASE BRING YOUR OWN SEWING MACHINE.

JOIN THE BREWSTER LADIES' LIBRARY BOOMERANG BAG SEWING COMMUNITY!  
BOOMERANG BAGS ARE REUSABLE BAGS MADE OF DISCARDED FABRIC  
INTENDED TO HELP REDUCE PLASTIC AND TEXTILE POLLUTION. THE BAGS ARE  
DISTRIBUTED FOR FREE INTO THE COMMUNITY. WE ARE LOOKING FOR  
VOLUNTEERS TO BECOME LEADING MEMBERS OF THIS GROUP.

REGISTER AT [BREWSTERLADIESLIBRARY.ORG](http://BREWSTERLADIESLIBRARY.ORG)

BREWSTER LADIES' LIBRARY  
1822 MAIN STREET, BREWSTER, MA 02631

[BOOMERANGBAGS.ORG](http://BOOMERANGBAGS.ORG)





# BLUE MARBLE LIBRARIANS



## BLOG

### Food Forest Path at the Truro Public Library

by Gabrielle Griffis on July 17th, 2023 | 0 Comments

#### By, Maggie Hanelt, Assistant Director and Youth Services Librarian at Truro Public Library

In 2021, the Truro Public Library applied for and received a Library Services & Technology Act (LSTA) grant through the Massachusetts Board of Library Services (MBLS) titled "Dig Into Youth-grown Vegetables, Fruits, and a Healthier World for All!" With this grant money, we focused on organizing a teen co-designing, building, and planting project and aimed to broaden the reach of Sustainable CAPE's Children's Community Garden by including the component of teaching about soil through demonstration gardening. We focused on personal learning opportunities to foster exploration and deeper understandings of what makes healthy soil with a focus on the most current care practices. Demonstration gardening, foraging, and preparing local foods were expanded with local farmers and the Lead Children's Gardner Farmer/Educator Sarah Naciri offering their expertise as presenters.



By creating outdoor educational spaces in the area around the garden which includes a mud kitchen for younger children and a cold frame; rain and shade areas for working in most outside conditions; and selecting appropriate educational materials including

## Facebook



## Outreach on Social Media

## Twitter



## Building Solidarity

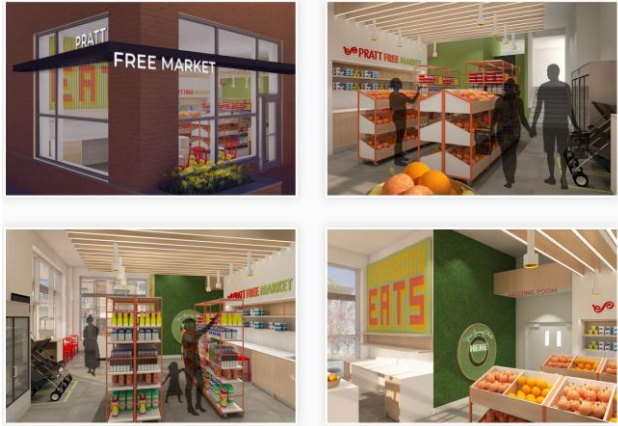
## Instagram



# M'Balu “Lu” Bangura

Chief of Equity and Fair Practice at the Enoch Pratt Free Library & Maryland State Library Resource Center





Pratt Free Market



Amplified Voices Series



Project ENCORE



ENOCH PRATT *free* LIBRARY

# Jenny Garmon

Civic Engagement Specialist, Kansas City Public Library (MO)



## Tap In Center: Kansas City

**Third Monday of each month**  
**5:00 – 7:00 pm @ Lucile H. Bluford Branch**  
**3050 Prospect Ave. Kansas City, MO 64128**

The Kansas City Public Library partners with several justice involved organizations to provide an opportunity for individuals with outstanding warrants to get legal assistance and connect with local support services about their criminal case.

### During these days and times, individuals can

Meet with an attorney about their criminal case

Check for outstanding warrants

Learn their case status and court date information

Apply for a public defender

Enroll in a program to receive court reminders

Get assistance navigating the court process

Connect with local services



CMR

UMKC  
School of Law



- Voting
- Taxes
- Exchanges with elected officials
- Media and News Literacy
- Civic Tools



Kansas City  
Public Library



# Today's Panelists



**M'Balu "Lu" Bangur,**  
Chief of Equity and Fair Practice,  
Enoch Pratt Free Library & Maryland  
State Library Resource Center  
[mbangura@prattlibrary.org](mailto:mbangura@prattlibrary.org)



**Jenny Garmon,**  
Civic Engagement Specialist,  
Kansas City Public Library (MO)  
[jennygarmon@kclibrary.org](mailto:jennygarmon@kclibrary.org)  
[communityreference@kclibrary.org](mailto:communityreference@kclibrary.org)



**Gabrielle Griffis,**  
Assistant Youth Services Librarian,  
Brewster Ladies' Library & Blue Marble  
Librarian (MA)  
[ggriffis@clamsnet.org](mailto:ggriffis@clamsnet.org)

# Rebekkah Smith Aldrich, MLS, LEED AP

rsmith@midhudson.org | @Rebekkah   

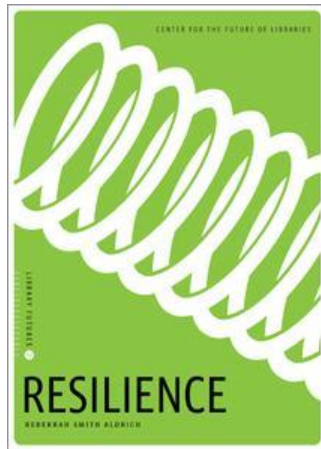
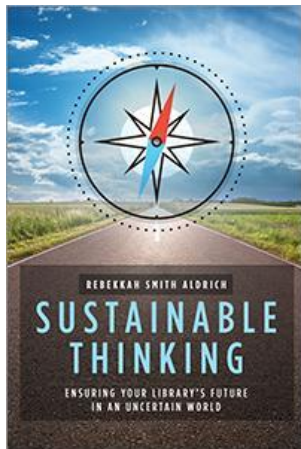
## Executive Director, **Mid-Hudson Library System**

Co-Founder & Board President, **Sustainable Libraries Initiative**

Member, Center for the Future of Libraries Advisory Group, **American Library Association**

Sustainability Columnist, **Library Journal**

**Author:** Handbook for Library Trustees in New York State; Handbook for New Public Library Directors in New York State; Public Library District Toolkit: Strategies to Assure Your Library's Legal and Financial Stability; and:



Thank You

# Sustainable Libraries: Resources and Webinars for Climate Action



**Sustainable  
Libraries  
Initiative**



New Sustainability topic area: [www.webjunction.org/explore-topics/sustainability.html](http://www.webjunction.org/explore-topics/sustainability.html)