

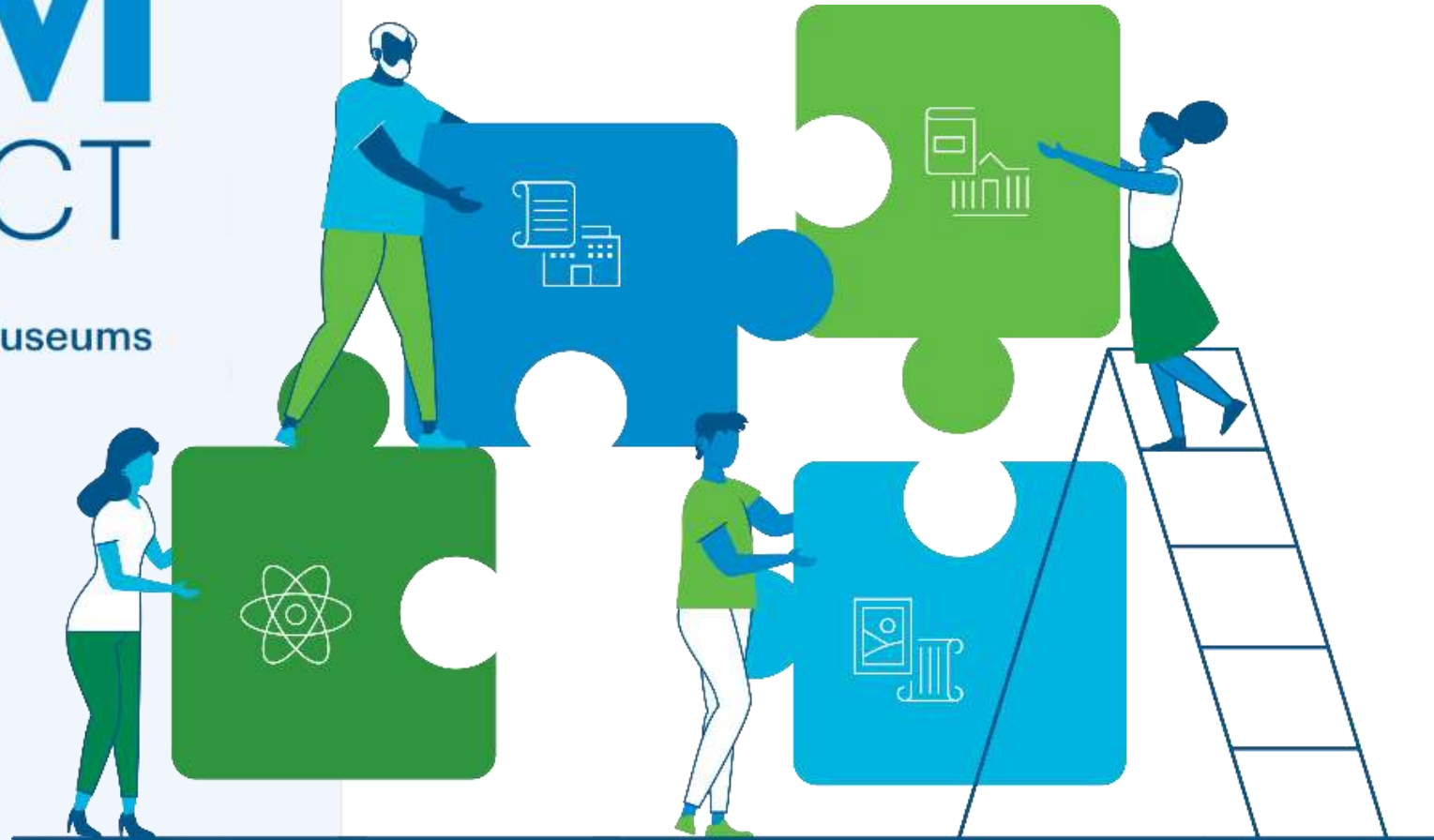
# REALM PROJECT

REopening Archives, Libraries, and Museums

28 September 2021

[oclc.org/realm-project](https://oclc.org/realm-project)

#REALMproject



This project was made possible in part by the Institute of Museum and Library Services, project number: ODIS-246644-ODIS-20.



**BATTELLE**

# PANELISTS

28 September 2021



**Frederic Bertley**  
President & CEO  
COSI, Ohio



**Stuart Hunt**  
Director, University Library  
& Collections Services and  
University Librarian of  
Reading, UK



**Gwen Mayhew**  
Head, Collection  
Access, Canadian  
Centre for Architecture



**Lynette Schurdevin**  
Library Director, Rio  
Rancho Public Library,  
New Mexico



**Moderator  
Kendra Morgan**  
Senior Program  
Manager, OCLC

This project was made possible in part by the Institute of Museum and Library Services,  
project number ODIS-246644-ODIS

# WELCOME

**Kendra Morgan**  
Senior Program Manager  
OCLC



# REALM PROJECT



- Project funder
- Consults on project goals and activities
- Convenes steering committee and working groups



- Collects and synthesizes stakeholder input to inform decisions
- Publishes and distributes research and information to the archives, libraries, and museums communities



- Conducts literature review
- Conducts research on materials



# PROJECT RESEARCH

REALM is providing data that helps us better understand the virus. Local institutions can use that data, along with local information about risk levels, to inform their practices and policies.

The project is NOT making recommendations. Every institution is different, and its team will need to develop policies that work for them and their community.



# 5 RULES TO HELP DECISION-MAKING



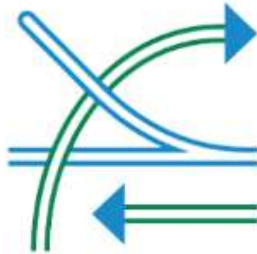
1

Most data will be flawed or incomplete. Be honest and transparent about this.



2

We may never have a “final answer” for many questions. Do you wait for certainty or act on the evidence you have?



3

Acknowledge the complexity, admit ignorance, and be open to exploring paradoxes.



4

Different people interpret data differently. Seek out outside perspectives for solutions.

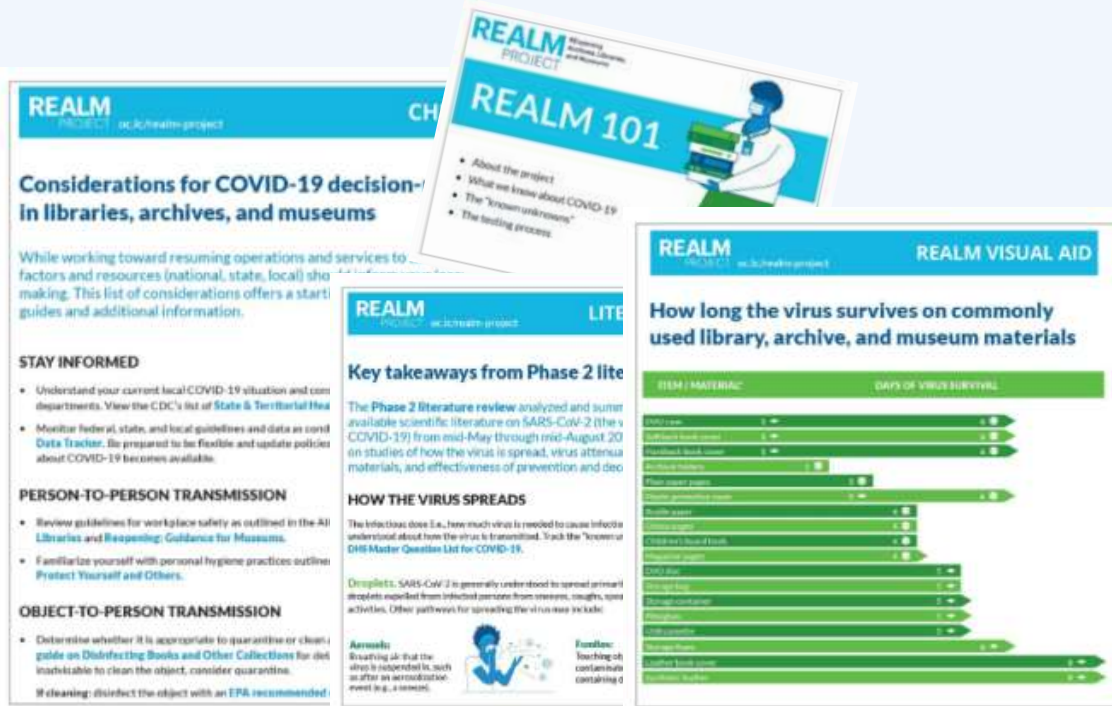


5

Observing real-world interventions can complement the findings of controlled trials and other forms of evidence.

# TOOLKIT RESOURCES

[oclc.org/realms](http://oclc.org/realms)



- **Decision-making checklist**
- **Visual aids of lab results**
- **Literature review synthesis**
- **Library and museum reopening plans**
- **Cleaning considerations**
- **Resource roundups**

... and more

# Frederic Bertley

**President & CEO  
COSI, Ohio**





# A COSI Pandemic Story

## A REALM Project Webinar

September 28 2021

**Frederic Bertley**  
**President & CEO**  
**Center of Science and Industry (COSI)**



















RoSi





AMERICAN MUSEUM  
OF NATURAL HISTORY





**AMNH: 1,700,000 square feet**





Story Time

2019



WHAT  
happened?









# NATIONAL IMPACT



**COSI has a national and global impact with experiences, and research and evaluation of lifelong learning experiences.**





OHIO MUSEUMS  
ASSOCIATION



LEAD MEDIA PARTNER

**bloo  
loop.**

**40**  
UNDER **40**



**SMART** **50**  
INNOVATION  
IMPACT  
SUSTAINABILITY



**AND THEN WHAT  
HAPPENED?**







COVID-19

SO, WHAT  
— DO —  
YOU DO?



# NORTH STAR

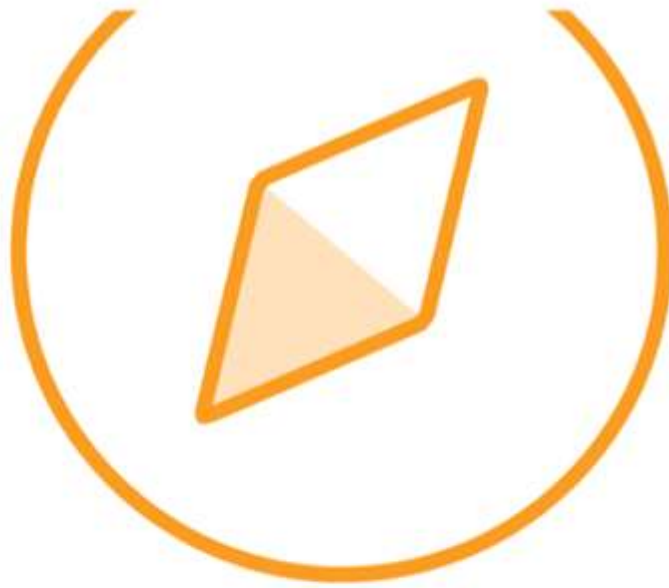




COSI's Vision and Mission

**TO ENGAGE,  
INSPIRE,  
& TRANSFORM**

**lives and communities by being the best partner  
in science, technology, and industry learning**



# **COSI 5.0**

## **A STRATEGIC PLAN**

### 2019-2024



# OUR GOALS

1

establish **COSI**  
as a leader in  
**STEM LEARNING**  
with a local, state, &  
national impact



3

deliver a **FUN**,  
**EDUCATIONAL &  
TRANSFORMATIONAL**  
**COSI** experience,  
internally and externally



4

strengthen **COSI's**  
**ENGAGEMENT &**  
defined **PARTNERSHIPS**  
in the community



5

expand the  
**COSI** brand to include  
**DIVERSE AUDIENCES**  
of all ages &  
backgrounds



2

ensure long-term  
**ECONOMIC  
SUSTAINABILITY**  
for **COSI** & grow  
its organizational  
capacity





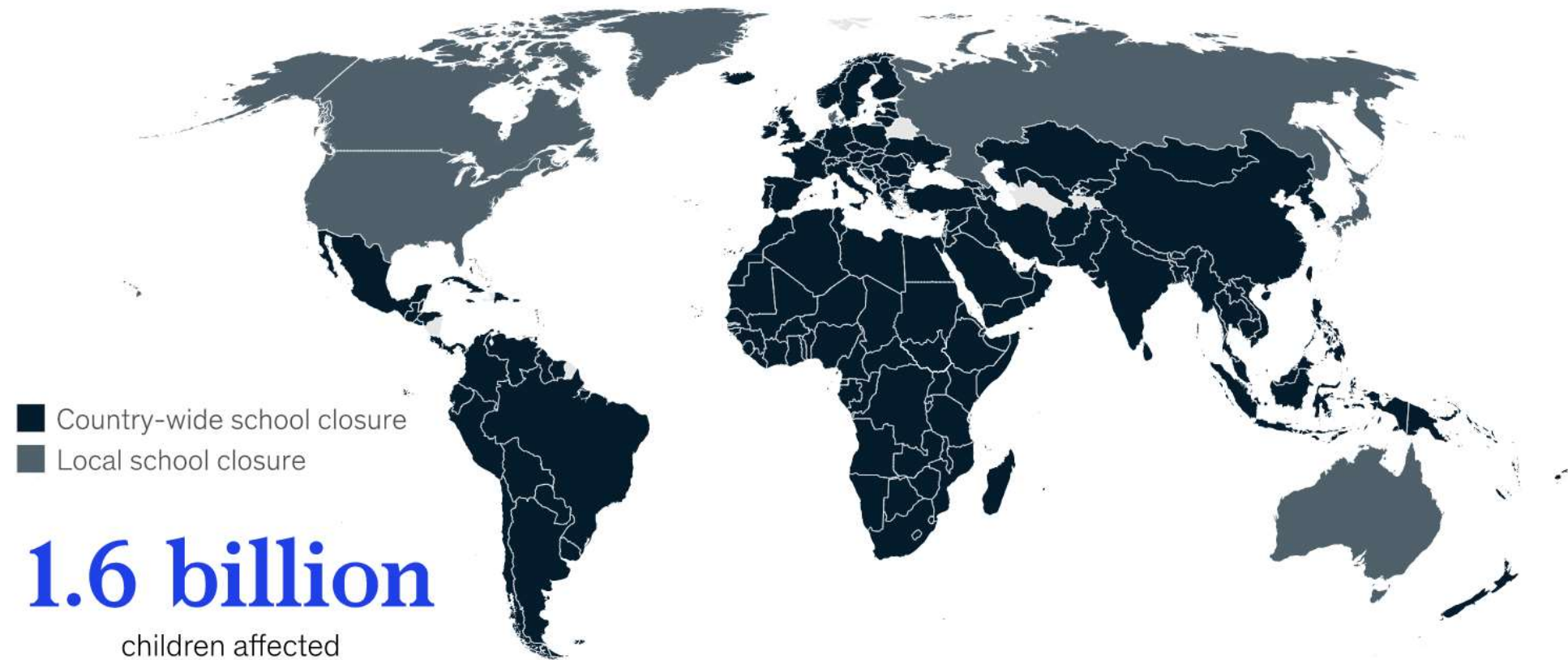
SORRY  
WE ARE  
CLOSED

**There were several opportunities...**



As of April 15, 191 governments had closed K–12 schools in response to the coronavirus.

School closures



Source: UNESCO









## Physical

- Impact education gap
- STEM kits for the underserved communities
- Driven thru partnerships



## Digital

- Science Literacy
- Engage Audience
- Impact Community



**FIRST INITIATIVE - PHYSICAL IMPACT**

**THE OFFICIAL LEARNING LUNCHBOX**





**WHAT IS IN THE BOX?**

# Phase I



## ACTIVITY 2: Nature's Zoom Lens

Can you magnify an image with water? Try it out in this activity!



### start here!

See a cool video!

Take a picture with your smart phone  
or view online: [cosi.org/waterkitvideos](https://cosi.org/waterkitvideos)



### gather your supplies:



FROM BOX

- sandwich bag
- paper slip with writing
- microscope slide
- pipette



FROM HOME

- water
- materials to observe
- optional: towel to clean



### what to do part 1: water bag exploration

1. Fill the sandwich bag with water. Zip it tightly and check that no water escapes from the bag when you press on it.
2. Experiment with viewing things through the bag of water – for example, the writing in a book, the ingredients on a bottle of shampoo, your hand, or a magazine page. Look at your items from different angles! Be careful: dropping or squeezing the bag too strongly could cause it to break open!
3. What happens if you have less water in the bag? Try filling it only about  $\frac{1}{4}$  of the way, then roll it so that the bottom is cylindrical, or tube shaped. How does this change the image you see?



### part 2: tiny water lens

1. Take a piece of paper with writing on it from your box and lay it flat on a surface like a table.
2. Place the microscope slide on top of the paper.
3. Carefully use your dropper to put a single drop of water on top of the microscope slide.  
How to use the pipette:
  - a. Gently squeeze the bulb of the pipette, dip it into a container of water, and release the bulb to draw water into the pipette.
  - b. Holding your pipette over the microscope slide, very gently squeeze the bulb to release a droplet of water.





## SPACE KIT



## NATURE KIT



## WATER KIT



## DINOSAUR KIT



## HUMAN BODY KIT

Operations



1,000 BOXES PER WEEK

















**OHIO  
MAYORS  
ALLIANCE**

---



**County  
Commissioners  
Association of Ohio**









Members of Congress and State Legislators







ODH  
5634  
io.gov

3:11PM

3









Lt. Gov. Husted





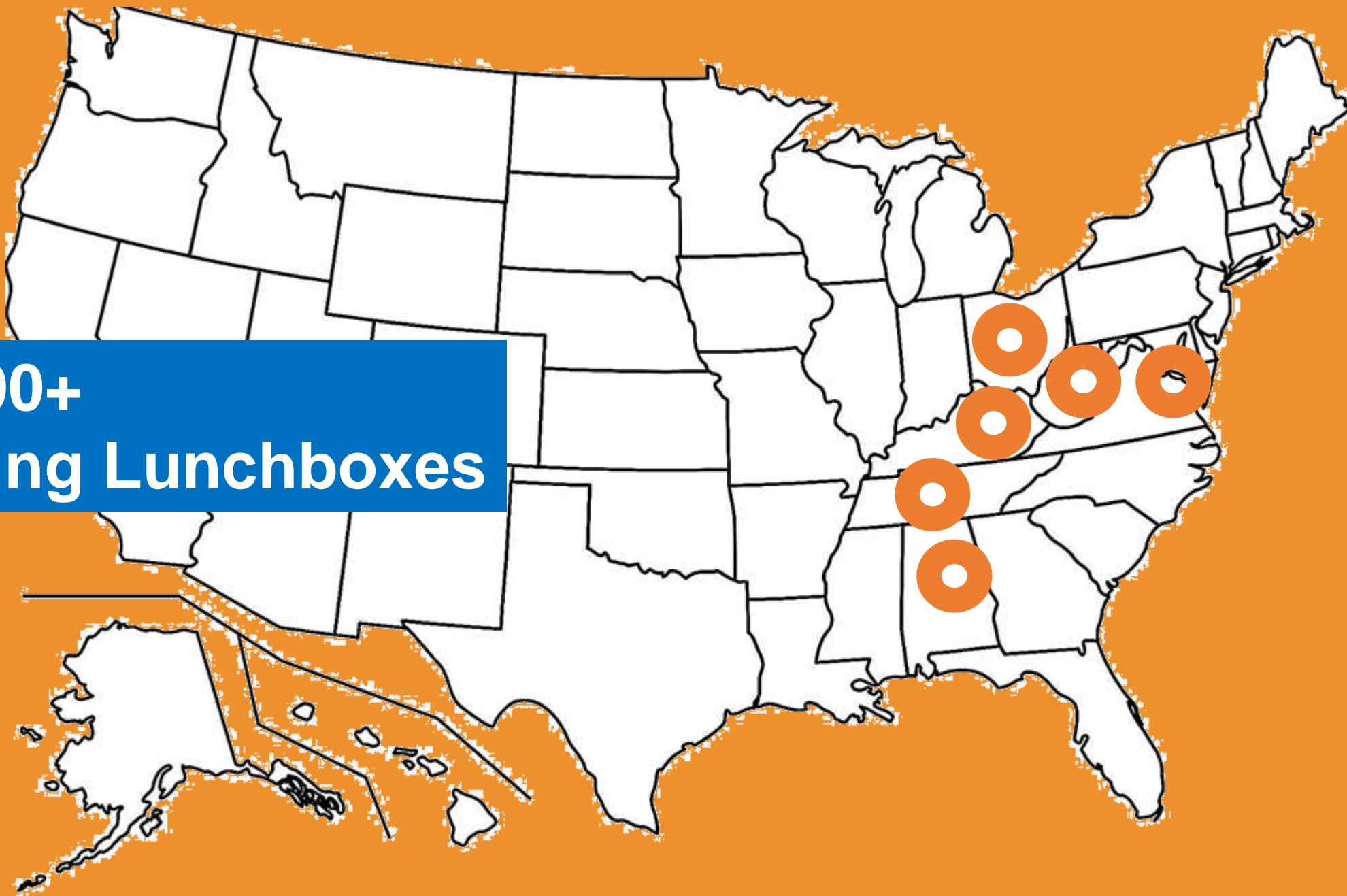
# Mid-Ohio Foodbank







**100,000+**  
**Learning Lunchboxes**

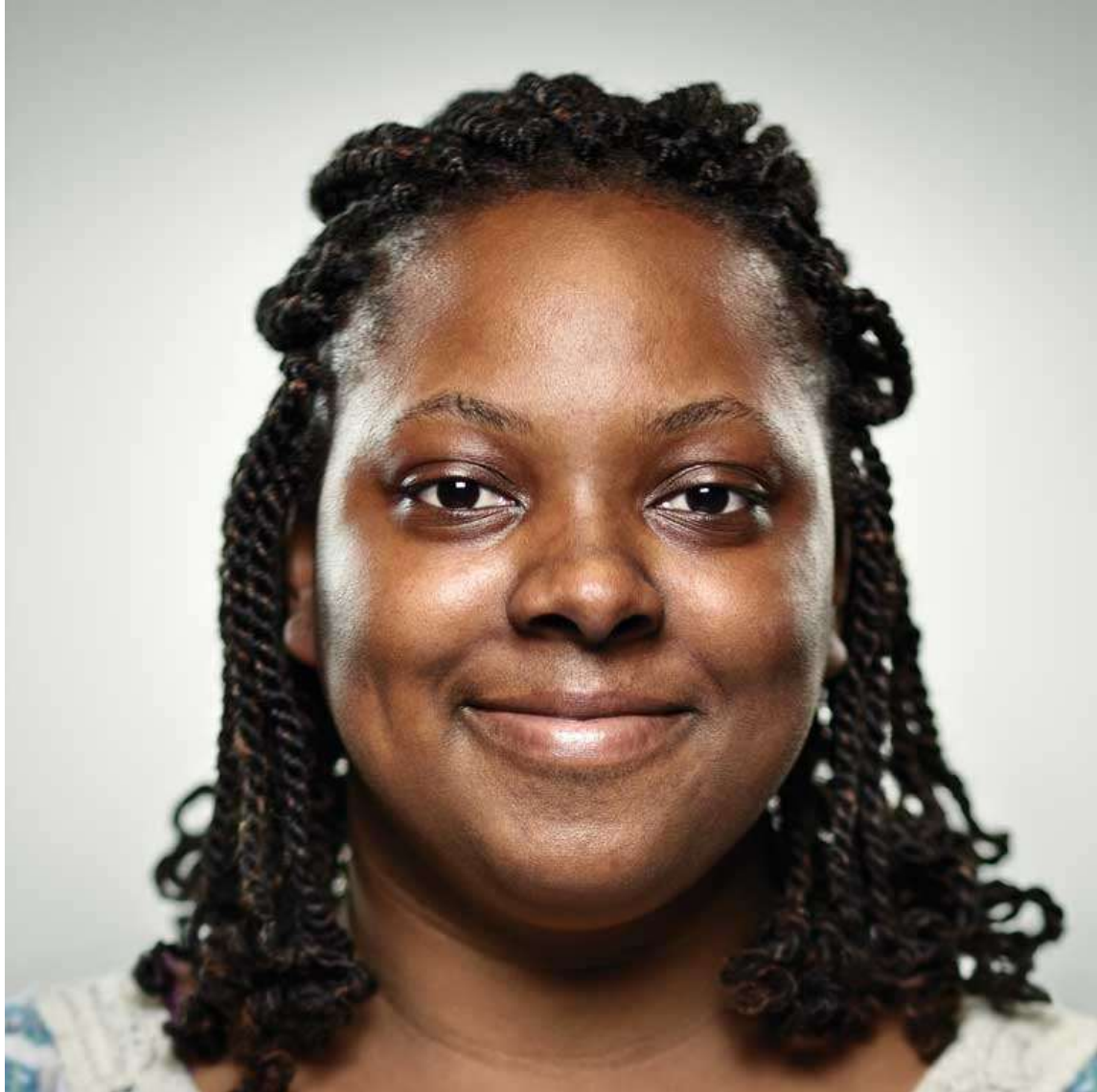


**Feeding Hungry Lives.**

**Feeding Hungry Minds.**

**Fulfilling Human Services.**





Supporting women and families in recovery



"My girls had so much fun with the Space kit. We did all the projects in the box. The enjoyed shooting the balloon rocket along the string, and the parachute. They really loved launching the rocket, and I am really glad we went outside for that because it went pretty high! Thank you for the opportunity"



Supporting women and families in recovery





Supporting family bonding for youth in foster homes





Supporting homeless families and youth

GOOD DAY COLUMBUS

## > BRIDGETTE'S STORY

>> COLUMBUS



# **SECOND INITIATIVE - DIGITAL IMPACT**



**CORONAVIRUS**

**PANDEMIC**

**ISSUE...**



SCIENCE  
LITERACY

The graphic features the words 'SCIENCE' and 'LITERACY' in a bold, white, sans-serif font, stacked vertically. The word 'SCIENCE' is on the top line, and 'LITERACY' is on the bottom line. The letters are white with a slight drop shadow. The 'S' in 'SCIENCE' is replaced by a stylized black and yellow molecular structure. The 'I' in 'SCIENCE' is replaced by a black and yellow microscope. The 'E' in 'SCIENCE' is replaced by a black and yellow test tube with a yellow liquid inside. The 'L' in 'LITERACY' is replaced by a black and yellow bar chart with four bars of increasing height. The 'I' in 'LITERACY' is replaced by a black and yellow syringe. The 'E' in 'LITERACY' is replaced by a black and yellow atom symbol. The 'R' in 'LITERACY' is replaced by a black and yellow DNA double helix. The 'A' in 'LITERACY' is replaced by a black and yellow cell diagram. The 'C' in 'LITERACY' is replaced by a black and yellow virus particle. The 'Y' in 'LITERACY' is replaced by a black and yellow protein structure. The background is a solid blue color.

# Improving Science Literacy



BROADCAST



DIGITAL



EDUCATION



ENGAGEMENT

Multi-year engagement initiative





# QED

*with Dr. B*

**WOSU** public  
media

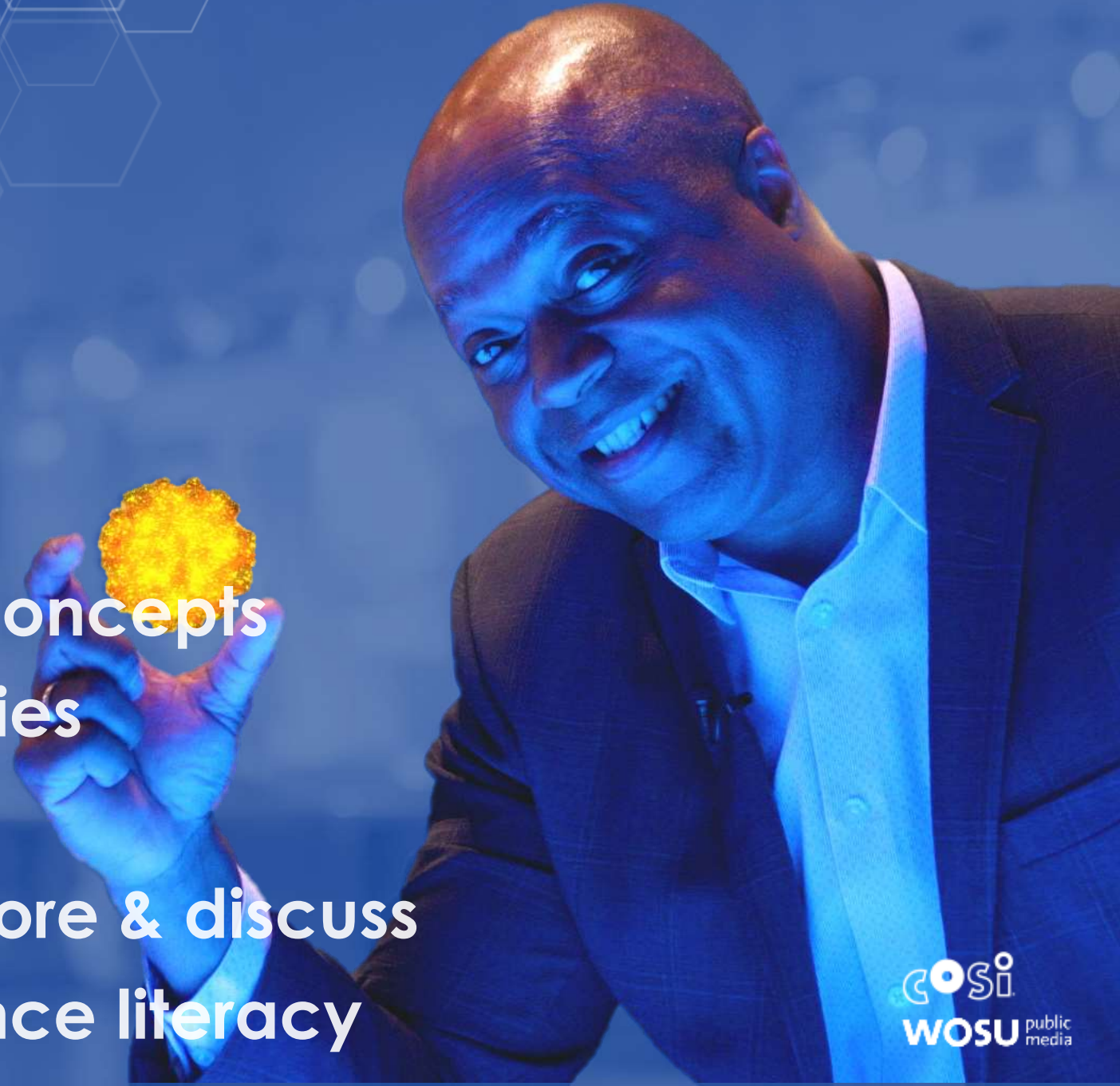
&

**COsi**  
Center of Science and Industry

SCIENCE IS  
EVERYWHERE  
SCIENCE IS  
FOR EVERYONE

***QED with Dr. B...***

- ▶ Breaks down science concepts
- ▶ Highlights personal stories
- ▶ Demystifies STEM
- ▶ Excites learners to explore & discuss
- ▶ Builds community science literacy





Episodes >



Decoding Viruses

Ep3 | 26m 46s



What Is Race?

Ep2 | 26m 46s



Bacteria, Superbugs And Antibodies

Ep1 | 27m 6s



Why We Exercise

Ep7 | 26m 45s



Everyday AI

Ep6 | 26m 46s



Climate Science Part 2

Ep5 | 26m 46s



# Episodes >



## Searching For Extraterrestrial Life

Ep10 | 26m 46s



## Stress: The Good, The Bad And The Useful

Ep9 | 26m 46s



## The Science Of Taste

Ep8 | 26m 46s



## Addiction And The Community

Ep13 | 26m 46s



## Addiction And The Brain

Ep12 | 26m 46s



## Advances In Gene Editing

Ep11 | 26m 45s



# EDUCATION EXTENSION

- ▶ Versatile content for student engagement
- ▶ Educator access to segments tied to state and national standards
- ▶ Opportunities to leverage COSI Connects and COSI Connects Kits





CHECK THIS OUT! COSI & WOSU HAVE A TV SHOW!

# QED with Dr. B

A fun and informative science series from COSI and WOSU. We ask real-life scientists big questions about our amazing world!

Watch with your family  
Wednesdays at 7:30pm on WOSU TV

What are real scientists  
discovering about?

Scan here to watch  
clips from the show.



What is climate change  
and why should I care?

Kathy Sullivan, Geologist  
(and former NASA astronaut)

What is the fanciest  
telescope in space?

Dr. Scott Gaudi, Astronomer  
(aka Exoplanet Hunter)

How do scientists search  
for life in outer space?



## Episodes >



### Advances in Gene Editing

Ep11 | 26m 45s



### Climate Science Part 1

Ep4 | 26m 46s



### Searching for Extraterrestrial Life

Ep10 | 26m 46s



### Why We Exercise

Ep7 | 26m 45s



### Climate Science Part 2

Ep5 | 26m 46s



### Extraterrestrial Intelligence

Clip: Ep10 | 8m 21s



# Watch the New Series

QED  
*with Dr. B*



Wednesday nights at 7:30pm on

**WOSU**tv

**WHAT DOES SUCCESS LOOK LIKE?**





**Thank  
You!**

**Mrs. Rubin's First Grade  
Patrick Elementary  
Canton City Schools**













**AND THEN WHAT  
HAPPENED?**



LEAD MEDIA PARTNER



**OHIO MUSEUMS**  
ASSOCIATION

**bloo  
loop.**

**40/40**  
UNDER

**SMART50**  
INNOVATION  
IMPACT  
SUSTAINABILITY









A large group of people, mostly wearing green, blue, and orange t-shirts, are gathered in a large hall. They are all waving their hands towards the camera. In the background, there is a large red circular logo with the word "COSI" in yellow. The logo is mounted on a wall with a sunburst pattern. Below the logo is a circular fountain. The text "THANK YOU!" is overlaid in white on the image.

THANK YOU!



# Stuart Hunt

**Director, University Library  
& Collections Services  
University Librarian of Reading, UK**



# International pandemic perspectives



Stuart Hunt

Director, University Library & Collections Services and University Librarian



~~PROBLEM~~

OPPORTUNITY

## Don't waste a good crisis

- What is the problem that we are trying to solve?
- What problems did the pandemic raise?
- Did the pandemic highlight already existing problems?



## Normal

- Stop talking about the “new normal” or the “next normal”
- Normal was the problem
- Normal is broken





## Agile workforce

- Liberation from space demands & constraints
- From transition to transformation
- Opportunity to re-frame
  - Who
  - What
  - When
  - Where
  - How
  - Why



## Being digital

- Faculty and student liaison
  - 1-2-1 support, teaching, instruction
- Increase in attendance & engagement
- Digital programmes to continue & nuance post-pandemic
- From study spaces to learning spaces
- Hybrid future



# FROM THE WORLD'S LARGEST SEED TO GODOT'S TREE

ALL OUR COLLECTIONS IN ONE PLACE ONLINE

EXPLORE



## Special collections and archives

- Transition to digital services for to access analogue collections
- Amplification of on-demand
- Digital on demand an increasing part of service
  - Users
  - For-free services

Welcome to the Virtual Reading Room, where you can access thousands of items from the University of Reading's [Special Collections](#), [Art Collections](#) and [Museum of English Rural Life](#) (The MERL). Browse selected low-resolution items by [The MERL Galleries](#) or by [Theme](#). [Sign in](#) / [register](#) with us to explore many more items, with high resolution viewing. Further information on digital access to the University's collections may be found [here](#)

## SEARCH

Selected low-resolution content only unless signed-in

- ☒ Match all words
- ☐ Match any of the words
- ☐ Words appear together as a phrase

Or tweak your search further using [Advanced search](#)

## BROWSE THE MERL GALLERIES



Browse The MERL galleries ➔

## BROWSE THEMES



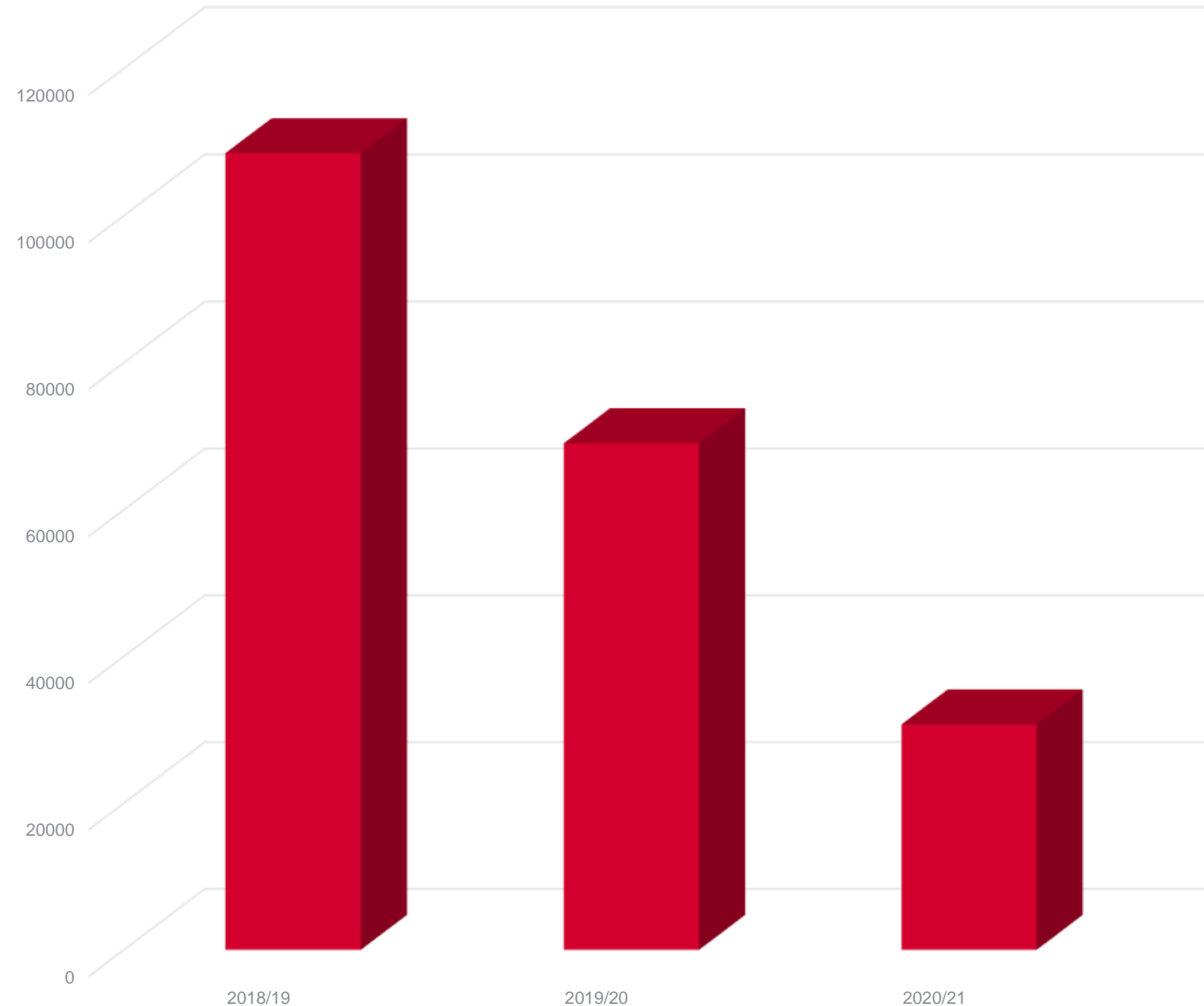
Browse themes ➔

## BROWSE COLLECTIONS

# Virtual reading room/virtual teaching space

- Items, objects & collections in digital environment
- New methods of engagement
  - Digital seminars & workshops
- Enhance & augment the physical experience





## Changing the “collections” mindset

- Breakdown in perception of ‘the library collection’
- Demise of the teaching (print) collection
- Shift to content strategy in support of user needs & requirements



## Learning from the demise of the physical library

- Lockdown showed that the library is already digital
- Subsequent re-opening & re-emergence of the physical library
- Library reduced to the bricks and mortar
- Better understanding of the use of space and facilities





# Gwen Mayhew

**Head, Collection Access,  
Canadian Centre for Architecture**









# International Pandemic Perspectives: Problem- Solving in Times of Crisis



Gwen Mayhew, Head of Collection Access,  
Canadian Centre for Architecture





## Land Acknowledgement:

The CCA is in the process of developing a long term and in-depth land acknowledgement in collaboration with members of the Kanien'kehá:ka Nation. We also recognize the many nations who are the original inhabitants and caretakers of these lands and waters, which is now home to many diverse First Nations, Inuit and Métis peoples. The CCA is a settler institution and we are working towards fostering affirmative relationships with Indigenous and other peoples across Tiohtià:ke/Mooniyang/Montréal. While the first phase of this project will be released in spring of next year, the CCA is committed to creating a living land acknowledgement that will provide support and resources to Indigenous communities and researchers.





View of the principal façade from across Baile Park, Canadian Centre for Architecture under construction, Montréal, Québec

Reference number:  
PH1988:0410

© David Miller





Façade of the CCA,  
Photo by Gwen Mayhew





Corner, Block,  
Neighbourhood,  
Cities. Alvaro Siza  
in Berlin and The  
Hague, 2016

© CCA



ABC: MTL – A  
Self-Portrait of  
Montréal, 2012

© CCA







Interior of CCA  
Bookstore

© CCA



CCA archival vault,  
Photo by Gwen Mayhew





CCA photo vault,  
Photo by Gwen Mayhew



CCA archival vault,  
Photo by Gwen Mayhew





CCA library vault,  
Photo by Gwen Mayhew



CCA library vault,  
Photo by Gwen Mayhew



CCA study room entrance,  
Photo by Gwen Mayhew





CCA study room,  
Photo by Gwen Mayhew





CCA study room,  
Photo by Gwen Mayhew



CCA study room,  
Photo by Gwen Mayhew



## RE: Liste de requêtes/Request list – [redacted]



Référence à la collection

Fri 2020-03-13 10:08 AM



To: [redacted]

Hello,

Your appointment for Monday, March 16 is confirmed.

The study room is open from 10 a.m. to 5 p.m. When you arrive at the CCA, please enter through the service door at the right side of the building (looking from Baile), next to the large garage door. Follow the corridor to the security desk and let them know that you have an appointment in the study room. If you are bringing electronic devices with you, such as a computer or a camera, you may need to give their serial numbers to the security staff.

**With the health of our visitors and staff in mind, if you have flu-like symptoms or are visiting from an area affected by COVID-19, we ask that you reschedule your visit for a later date. Please check our website (<https://www.cca.qc.ca/en/>) for updates regarding unexpected closures.**

Please note that:

- During winter months, outdoor footwear must be left in the coatroom. We invite you to bring a change of shoes, otherwise you will be provided slippers at the entrance.
- Coats must be left in the cloakroom and bags must be left in the bag room adjacent to the study room.
- Food and drink (including bottled water) are not permitted in the study room.
- Pens are prohibited and notes must be taken only with graphite pencil.
- All researchers must respect the materials handling guidelines and staff directions.

Best wishes,  
Tim

## Fermeture du CCA / Closing of the CCA

Bonjour,

Le CCA a pris la décision de fermer le Musée, la Librairie ainsi que la Salle de lecture à compter de 17h ce soir, et ce pour une durée indéterminée afin de limiter les sources de contaminations et protéger le public.

Malheureusement, cela signifie que votre rendez-vous à la salle d'étude du CCA a été annulé. Veuillez confirmer que vous avez bien reçu ce message.

Vous pouvez consulter notre site Web (<https://www.cca.qc.ca/fr/>) pour connaître la date de réouverture et nous contacter pour reporter votre rendez-vous.

Bien cordialement,  
Référence CCA

---

Hello,

The CCA has taken the decision to close the Museum, the Bookstore and the Reading Room as of 5 p.m. this afternoon, for an indefinite period to limit sources of contamination and protect the public.

Unfortunately, this means that your research appointment at the CCA study room has been cancelled. Please confirm that you have received this message.

You can check our [website](#) to see when we reopen and then contact us to reschedule your appointment.

Best wishes,  
CCA Reference





Façade of the CCA,  
Photo by Gwen Mayhew

## RE: Question Regarding Aldo Rossi Materials



Référence à la collection

Tue 2020-03-17 10:10 AM

To:

[Redacted]

Dear

[Redacted]



I am sorry to dampen your enthusiasm:

Currently, the CCA and its study room are closed to prevent the spread of the COVID-19 virus.

We are currently working from home and don't have access to any archival materials. Unfortunately, this means that I cannot take any photos for you at the moment (although I would have liked to have another look at Rossi's Sysran drawings as well).

I will keep your request for images in mind, of course, but as the CCA is closed until further notice, I don't know when I will be able to take the photos.

I hope you and your family are safe as well.

Beste Grüße,  
Tim Klähn

---

**Référence à la collection**

Collection reference

**Centre Canadien d'Architecture**

**Canadian Centre for Architecture**

1920, rue Baile, Montréal, Québec, Canada, H3H 2S6



## Museum Archives Section Digest for Saturday July 11, 2020

Original Message:  
Sent: Jul 09, 2020 11:52 AM  
From: Michelle Elligott  
Subject: Reopening plans

Dear colleagues,

At The Museum of Modern Art, we have just begun to return to work at our offices. The Museum does not yet have a date for the opening of the galleries to the public, but we are hoping it will be sometime before the end of summer.

In the Archives, we have no plans to reopen to the public for the foreseeable future, and are developing plans to create a scan on demand service. [Which by the way, if anyone has good documentation / policy on yours and are willing to share, we would be very happy to receive copies.]

My main question is -- are any of you already reopened to staff or do you have plans to reopen your reading rooms for staff in the near future? I would be most grateful to learn your thoughts on the topic. And if there is a small cohort who would like to discuss the matter, I would be happy to arrange a zoom call if you could just let me know your interest, perhaps by next Monday, July 13.

Many thanks,  
Michelle

--

MoMA is temporarily closed to help New York City and our global community curb the spread of the coronavirus outbreak. We care about everyone's health and safety. Learn more [here](#).

**Michelle Elligott**  
Chief of Archives, Library, and Research Collections

Re: [EXTERNAL] Re: Continue discussion of Reopening Plans/Efforts



Dan Lipcan [redacted]

Mon 9/21/2020 11:32 AM

To: Leslie Cade [redacted]

Cc: Gwen Mayhew; [redacted]



Hi Gwen,

We have a "quarantine cart" for our reference collection located in the reading room.

Visitors are asked to place anything they pull from our reading room shelves onto it, and we reshelve it the following week. (We kindly ask that they put anything they touch onto the cart, whether they open it or not.)

Dan

On Mon, Sep 21, 2020 at 11:30 AM Leslie Cade [redacted] wrote:

We have removed all of our browsable materials, including new acquisitions and serials, so that we can follow our quarantine procedures. Everything must be paged.

**Leslie Cade**

T 216-707-2492



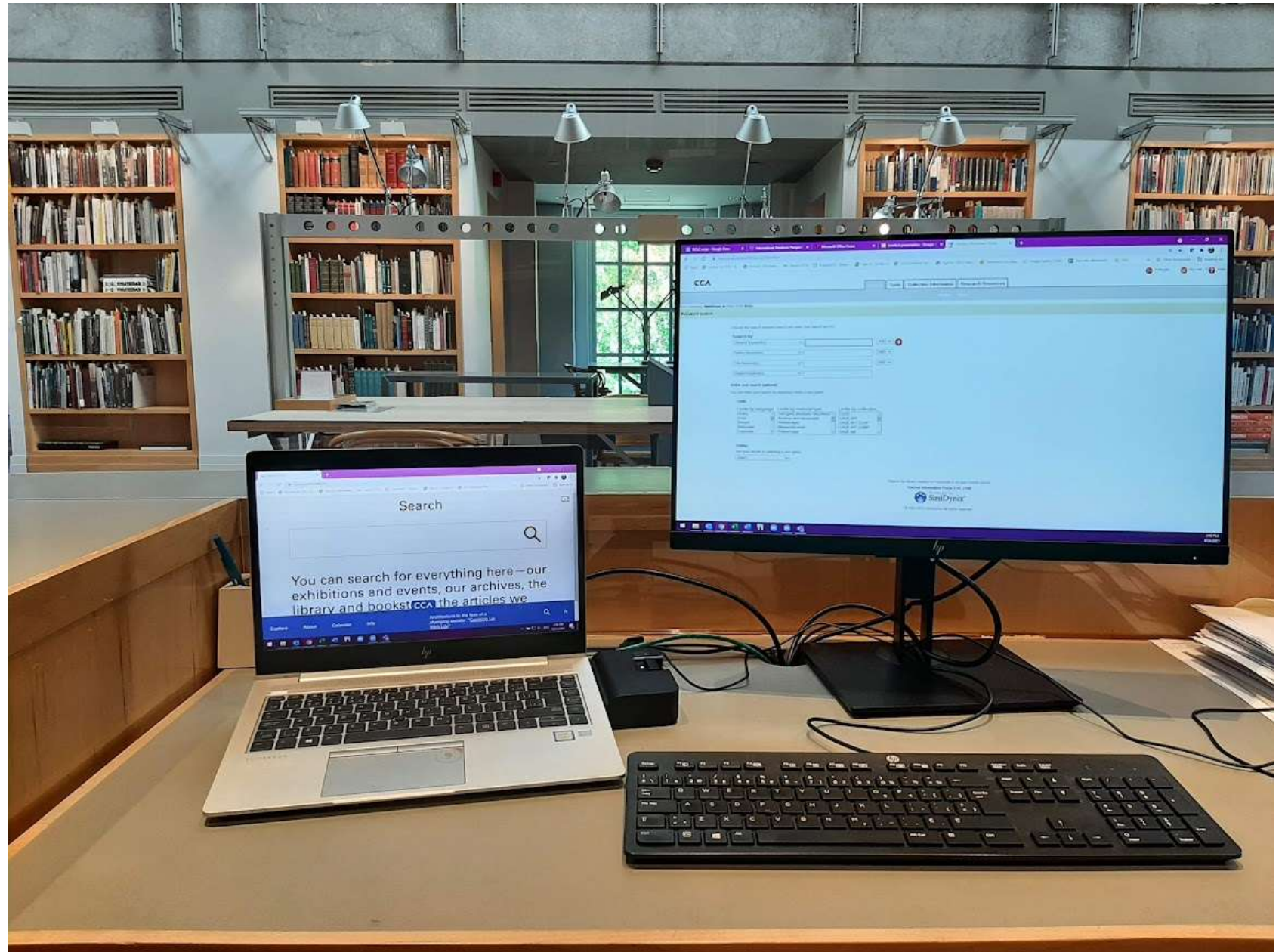


CCA study room,  
Photo by Gwen Mayhew



CCA study room,  
Photo by Gwen Mayhew





CCA study room,  
Photo by Gwen Mayhew

## Museums

# ‘All We Want Is Some Respect’: Overworked Museum Guards at the Met Say They’re Being Asked to Do More Work With Less Help Than Ever

Employees say that the department responsible for keeping the Met and its visitors safe is struggling to function.

Headline from ArtNet News, August 2<sup>nd</sup>, 2021



## Museums

# As Nonprofit Workers Push for Representation, Brooklyn Museum Staffers Have Voted to Unionize by an Overwhelming Margin

The vote passed with a 96 percent approval rate.

## Museums

# Art Institute of Chicago Employees Are Trying to Unionize, Saying They Are Overworked and Underpaid

60 workers issued a letter this week announcing their plans.

Headlines from ArtNet News, August 23rd, 2021 and August 4<sup>th</sup> 2021

# When Museums Are Better At Preserving Objects Than Staff

Ellen Spangler • September 6, 2021 • burnout, organizational culture  
advocacy, burnout, business, healing, museum, organization



Roughly one-fifth of museum workers do not expect to remain in the field in three years, according to the [American Alliance of Museums \(AAM\) report on the impacts of COVID-19](#). While AAM's report is rooted in the current reality of the pandemic, the main barriers described by survey respondents—compensation, burnout, and a lack of opportunities for advancement—are long-time challenges that have merely been heightened by COVID-19. In fact, these barriers echo findings of an informal survey about why museum workers leave the field, conducted in 2016 and published on [AAM's Alliance blog](#). Furthermore, the greatest shared concern of respondents from AAM's recent survey was for the wellbeing of colleagues, demonstrating that burnout is not just prevalent, it affects a team's ability to work effectively.

## What is burnout?

In her [New Yorker article](#), Jill Lepore defines burnout this way: "To be burned out is to be used up, like a battery so depleted that it can't be recharged. In people, unlike batteries, it is said to produce the defining symptoms of 'burnout syndrome': exhaustion, cynicism, and loss of efficacy." Lepore explores the history of the term, from its origins by psychoanalyst Herbert J. Freudenberger in 1974 to its more recent recognition by the World Health Organization as an occupational phenomenon, not as a medical condition. In 2018, education philosopher [Doris A. Santoro](#) also emphasized the role of the work environment, instead preferring the term "demoralization." In Santoro's K-12 setting, "burnout" puts the onus on the teacher not possessing the aptitude or self-care practices to handle the job; whereas "demoralization" suggests that institutional structures cause teachers to become separated from their moral motivations that brought them to the field to do the "good work."

## What can we do to prevent it?

Burnout is a buzzing topic right now, and it's important that we keep the dialogue going. There are systemic organizational structures that can contribute to (and prevent) burnout, and we must all take part in the conversation, from directors to department and mid-level managers, to early career professionals. No one likes to admit that they are struggling, but if we are able to move beyond just *leaning in* and instead towards *leaning on each other*, we will have a better chance at preserving not only ourselves but our beloved organizations.

I recognize the irony of writing this post as a consultant, someone who left decades of experience as a museum educator after noticing recurring patterns that were contributing to my own feelings of burnout. However, this break from museums has given me a bird's-eye perspective that not only contributes to a broader understanding of the museum field's quirks and intricacies but greatly informs the work I now do in support of it.

## This is what I'm hearing from my museum colleagues:

### 1. Redefine expectations.

Museum teams must take stock not just of objects and programs but also of their greatest resource—their staff. With organizational planning often

Article by Ellen Spangler, museum consultant, from Three Notch'd Nonprofit Solutions blog





CCA library staff office,  
Photo by Gwen Mayhew



CCA library staff office,  
Photo by Gwen Mayhew



CCA study room,  
Photo by Gwen Mayhew





Façade of the CCA,  
Photo by Gwen Mayhew



# Lynette Schurdevin

**Library Director,  
Rio Rancho Public Library,  
New Mexico**





**March 18, 2020 Story Time  
with the  
Mayor of Rio Rancho**












JOIN THE ADVENTURE

# Dungeons & Dragons

MARCH & APRIL 2021  
AGES 14+



RIO RANCHO PUBLIC LIBRARIES

## Virtual Program: Literary Musings: Islands

Wednesday, March 10, 1 p.m.

Registration begins March 1, at 8 a.m.



Join us on zoom for Literary Musings, our book discussion group. Share any book that are about islands, fiction or non-fiction.





*Imagine Your Story*

## GRAB & GO BOOK BAGS

Ages 0 - 6 | 7 - 12 | 13 - 19

Do you miss browsing the  
library shelves for  
great books?

We're here to help!

Visit us at [www.rmm.gov/library](http://www.rmm.gov/library)  
and select Grab & Go under the  
Youth or Teen Services tab

**Monday, June 22, 2020**





**Literary Lottery  
curated book  
bags for  
adult readers**







Best Costume Winner!





VIRTUAL PROGRAM:

## Italian Cooking Demo

Friday, November 6 at 1 p.m.  
Zoom Program

In this virtual program, Professor Lucio Lanucara will demonstrate some Italian cooking. Join us on Zoom for this unique presentation!  
Registration is required and runs from Monday October 19 at 8 a.m. through Thursday November 5 at 3 p.m.



**Rio Rancho Library and Information Services**  
Loma: 755 Loma Colorado Blvd NE  
Esther: 950 Pinetree Rd SE  
Rio Rancho, New Mexico 87124 | L(505)891-5013 E(505)891-5012  
[www.rmm.gov/library](http://www.rmm.gov/library)

## ALL ABOUT SHEEP

Thursday, June 24 @ 2 pm

This virtual program will be broadcast via Zoom  
and details will be emailed to registrants.



Presented By:  
**NEW MEXICO  
FARM & RANCH  
HERITAGE  
MUSEUM**



Hear some strategies  
from local published author  
Reese Hogan.



Registration  
Oct. 19 - Nov. 1



Virtual  
Program:  
NanoWriMo  
Tips, Tricks, &  
Motivation

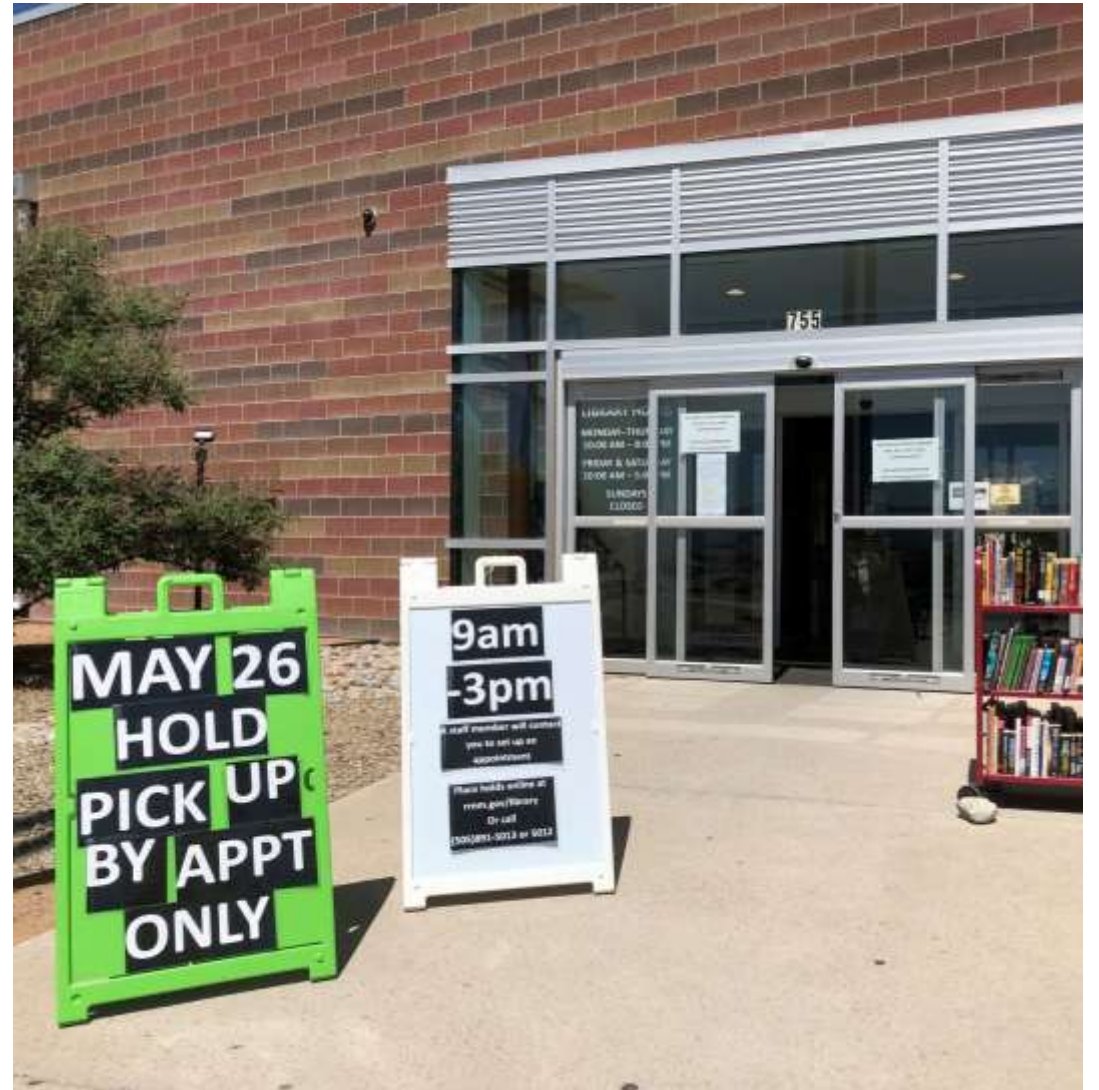
Monday,  
November 2,  
at 1:00 pm  
on Zoom



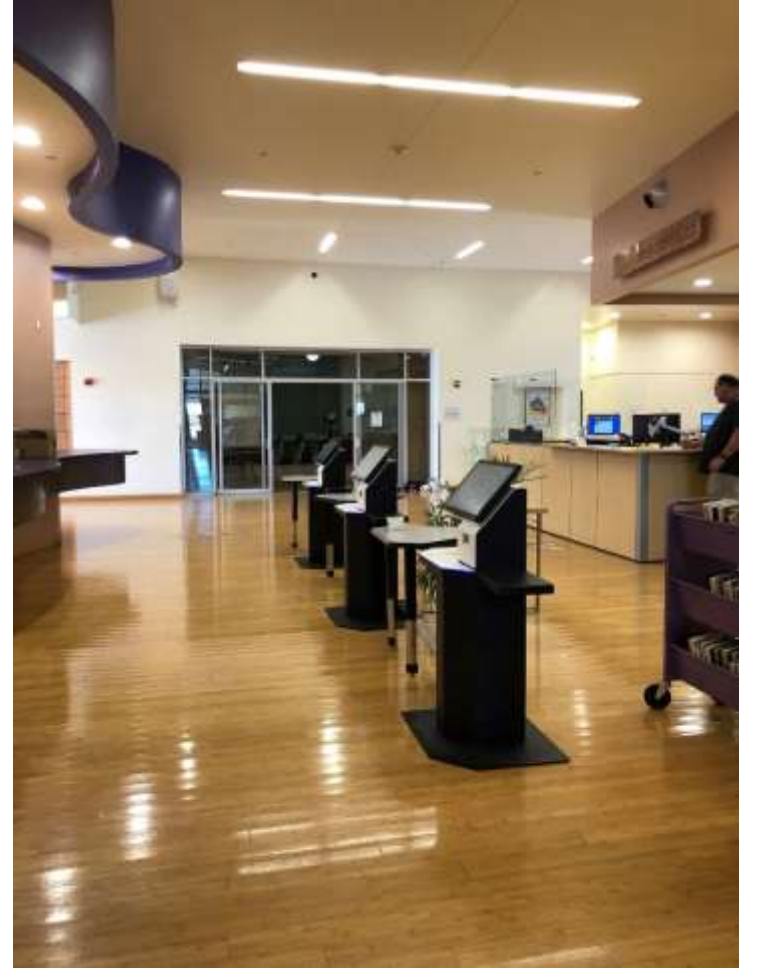
**Loma Colorado Main Library**  
755 Loma Colorado Blvd NE  
Rio Rancho, New Mexico 87124 | 505-891-5013  
[www.rmm.gov/library](http://www.rmm.gov/library)

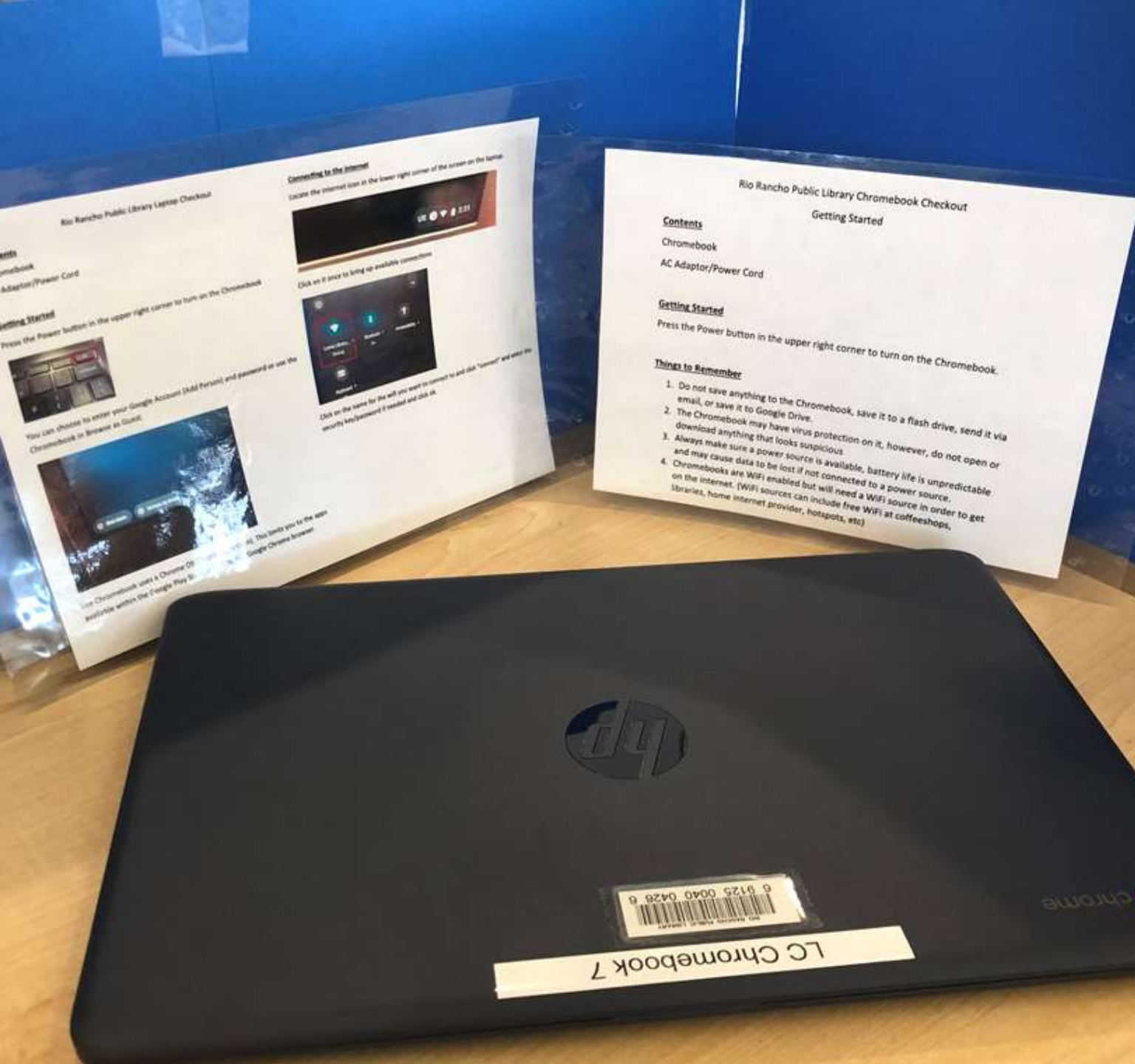














**Thank you!**

# QUESTIONS



**Frederic Bertley**  
President & CEO  
COSI, Ohio



**Stuart Hunt**  
Director, University Library  
& Collections Services and  
University Librarian of  
Reading, UK



**Gwen Mayhew**  
Head, Collection  
Access, Canadian  
Centre for Architecture



**Lynette Schurdevin**  
Library Director, Rio  
Rancho Public Library,  
New Mexico



**Moderator  
Kendra Morgan**  
Senior Program  
Manager, OCLC

This project was made possible in part by the Institute of Museum and Library Services,  
project number ODIS-246644-ODIS



# THANK YOU

#REALMproject [oclc.org/realm-project](https://oclc.org/realm-project)



**REALM**  
PROJECT

This document synthesizes various studies and data; however, the scientific understanding regarding COVID-19 is continuously evolving. This material is being provided for informational purposes only, and readers are encouraged to review federal, state, tribal, territorial, and local guidance. The authors, sponsors, and researchers are not liable for any damages resulting from use, misuse, or reliance upon this information, or any errors or omissions herein.



**BATTELLE**