

Today's Presenters



Casey Cox
Library Technician,
Tooele City Library,
Utah



Erica Lake
Associate Director, Hope
Fox Eccles Health Library,
and Associate Librarian,
Spencer S. Eccles Health
Sciences Library, U of Utah



Katie Larsen
Library Technician,
Tooele City Library,
Utah



Liesl Seborg
Senior Librarian, Adult
Outreach & Programming,
Salt Lake County Library
Services, and winner of the
2016 ULA Librarian of the
Year Award



PUBLIC AND HEALTH SCIENCES LIBRARY COLLABORATION FOR COMMUNITY IMPACT: LESSONS FROM THE MS BUDDY PROJECT

OCCL WebJunction Presentation June 9, 2016

Casey Cox, Tooele City Public Library
Erica Lake, Hope Fox Eccles Health Library
Katie Larsen, Tooele City Public Library
Liesl Seborg, Salt Lake County Library Services

ILEAD USA UTAH 2015 PROGRAM



Innovative Librarians Explore, Apply and Discover

ORIGINAL CONCEPT

Need
Ideas



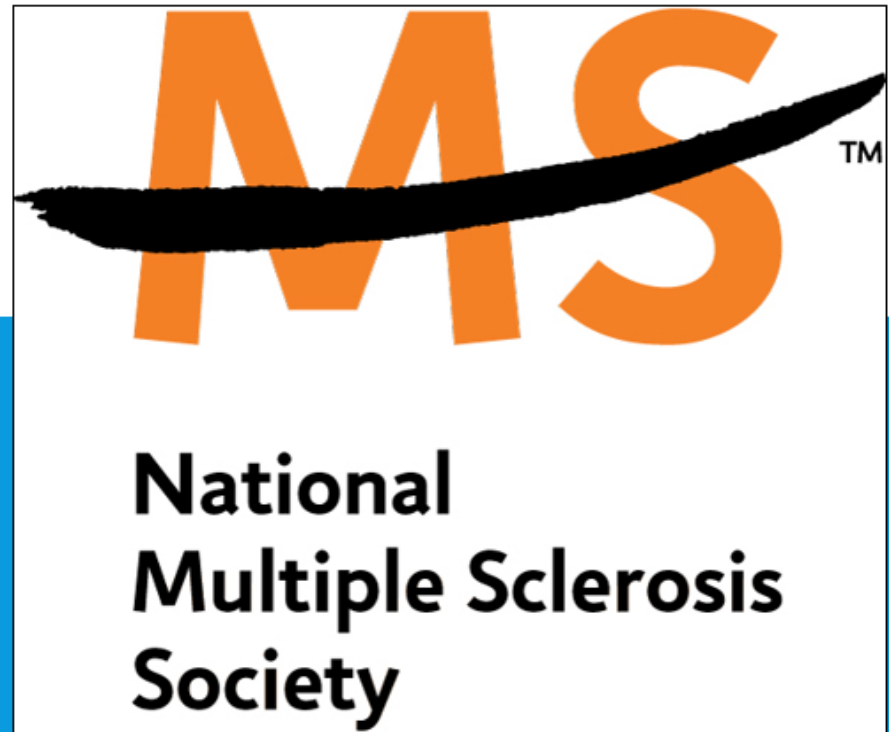
TABLETS

Portable
Internet Access
Content
Simple Tech



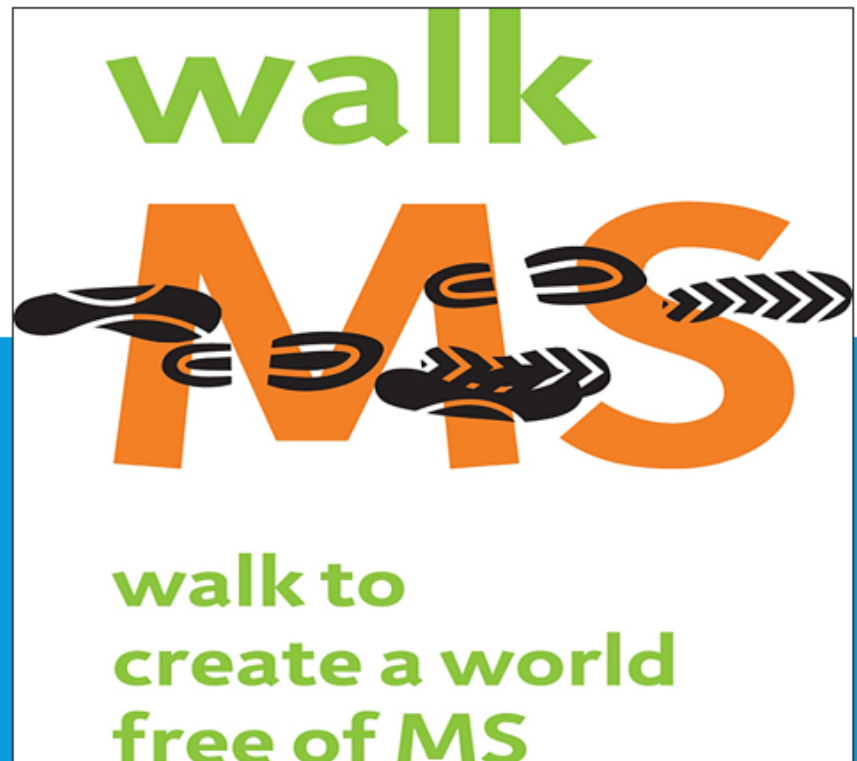
CONNECTING WITH THE LOCAL MS SOCIETY CHAPTER

Isolation Initiative



WHAT DO THEY WANT

Research
MS Society
MS Walk 2015



MS BUDDY PROJECT

Customized content

Vetted apps, websites, & videos

On-device help

Content relevant to individual

1-on-1 training



PROJECT CHALLENGES



PROJECT CHALLENGES

Funding



PROJECT CHALLENGES

Devices



PROJECT CHALLENGES

Participants



IMPLEMENTATION RECOMMENDATIONS

Policies & Research



IMPLEMENTATION RECOMMENDATIONS

Create Buy-In



IMPLEMENTATION RECOMMENDATIONS

Multiple Partners



IMPLEMENTATION RECOMMENDATIONS

Flexibility



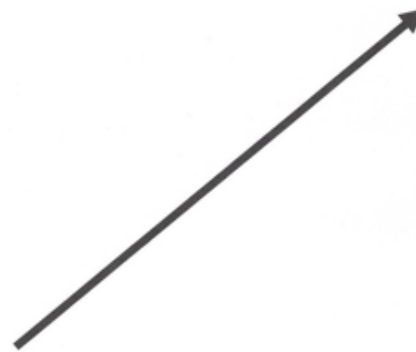
IMPLEMENTATION RECOMMENDATIONS

Flexibility

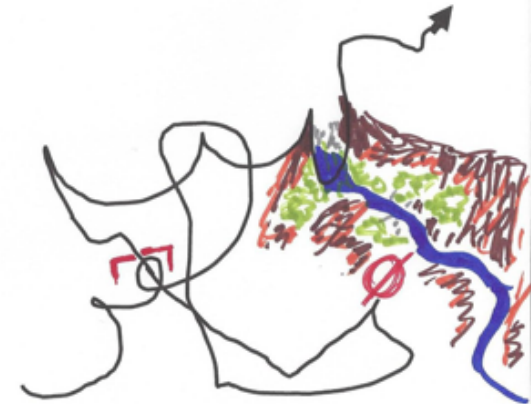


SUCCESS

Success Success

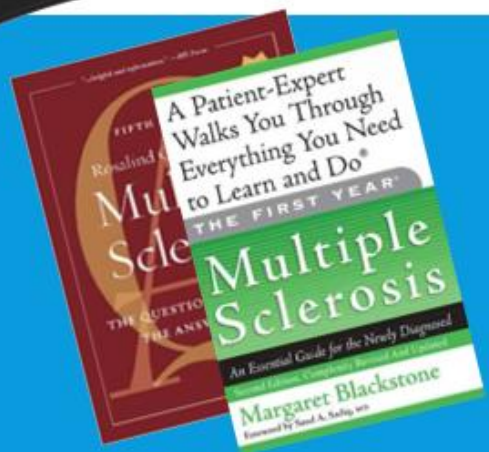


WHAT PEOPLE THINK
IT LOOKS LIKE



WHAT IT REALLY
LOOKS LIKE

MS BUDDY KIT



DELIVERY SYSTEM



DELIVERY SYSTEM

EASE OF USE

CONVENIENT & UNOBTRUSIVE

FEEDBACK



IMPACT

“I would recommend Doctor offices getting patients started on these websites once they are diagnosed. This is also great for managing MS all on one tablet. Wish I had something like this early on. Thanks!”

MS Buddy User

IMPACT



“Overall, this has been a great experience. It has provided me with knowledge, comfort, and a few apps that I will now always use.”

Ashlee B.

LIVING LIKE YOU

A REAL LOOK AT LIFE WITH MS



Eric Downer - Ireland



Donna Sullivan - USA



Marcia Denardin - Brazil



Jamie Tripp Utitus - USA



Retha Sisler – South Africa



Emma O'Shea Carroll - Ireland

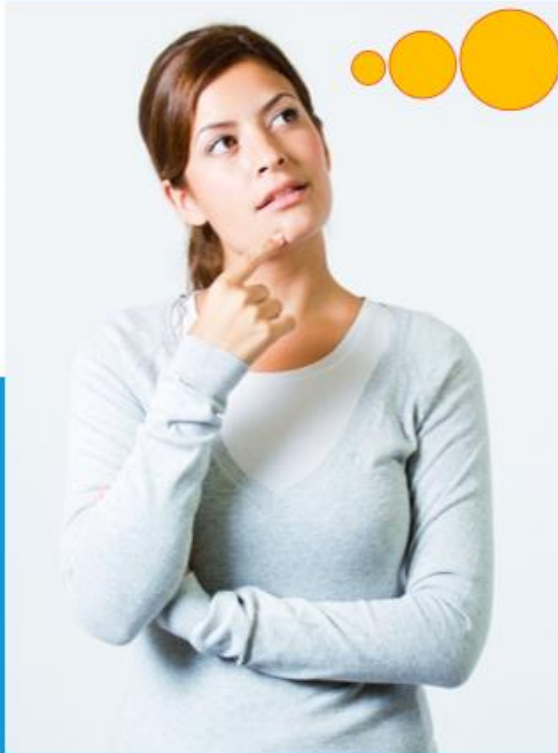


Tony Carroll - Ireland



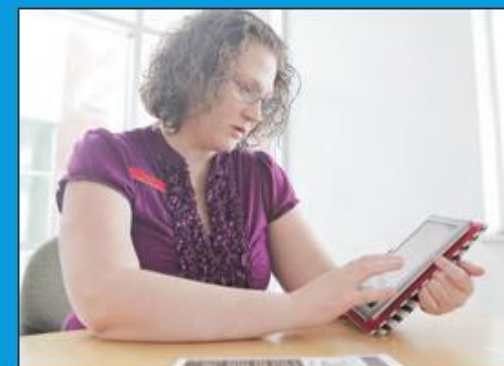
Angela Brandt - USA

<http://www.livinglikeyou.com/en>

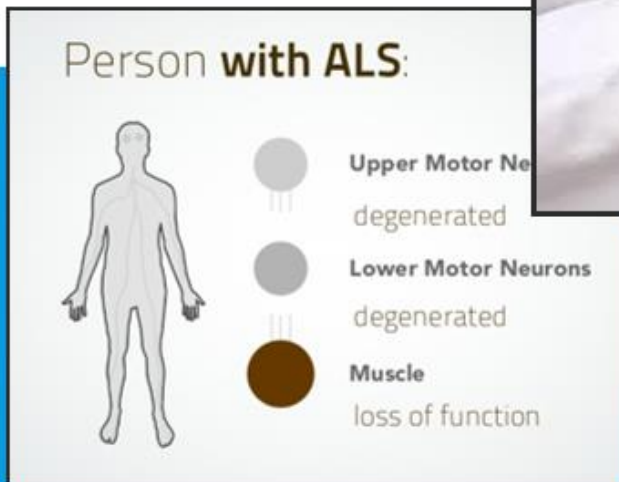
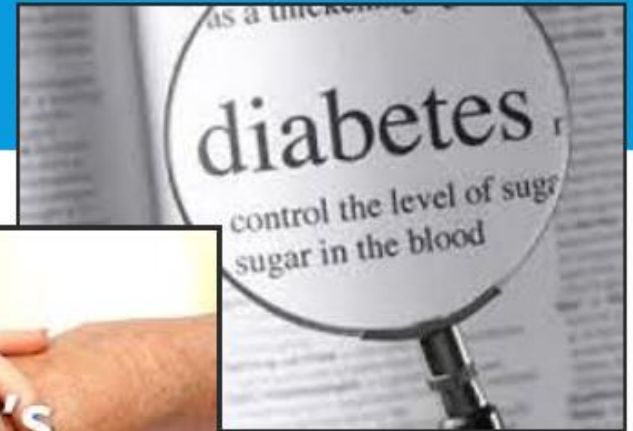


**“Hmm, I can see a
need for something
like this at my
library...”**

ANY LIBRARY, ANYWHERE



ADAPTABLE



STEP-BY-STEP TOOLKIT

Resources

These resources are available for download and use.

Documents for the Project

Patient Intake Form

Form we used to survey potential participants.

Resource Sheet

This Resource Sheet lists the websites, apps, and resources we included on the MS Buddy Project iPads. All are useful for patients, providers and caretakers.

Test Drive Flyer

This flyer can be placed in provider lobbies, or other locations, so interested MS Patients may participate in the program.

Participant Evaluation

This webform is used for participant weekly evaluation of the tablet and its content.



iPad Specifics

For details on setting up the iPads and creating profiles.

MS Buddy Project Kit Contents

This is the current list of contents in each kit.

Guidelines for Participation

We go over the iPad kit with each Participant in person and include this document for reference.



ONWARD!



MS Walk 2016: Katie Larsen & Casey Cox



Dr. John Rose

PROMOTING TO LIBRARIANS

Mosaic | Mosaïque

Be part of the big picture
Faites partie du portrait global

MLA'16 CHLA/ABSC ICLC



May 13-18, 2016 🇨🇦 Toronto
www.mlanet.org ■ #mlanet16
Medical Library Association



IFLA World Library and Information Congress

82nd IFLA General Conference and Assembly

13–19 August 2016, Columbus, Ohio, United States of America

HOW TO SHARE THIS WITH OTHERS



www.ms BuddyProject.org/librarians.html



SPECIAL THANKS TO OUR MENTORS,
TRISH HULL AND JAMI MUNK CARTER,
ILEAD USA AND THE UTAH STATE LIBRARY,
SPENCER S. ECCLES HEALTH SCIENCES LIBRARY, UNIVERSITY OF UTAH
SALT LAKE COUNTY LIBRARY SERVICES
TOOELE CITY PUBLIC LIBRARY

QUESTIONS?



CASEY COX, ERICA LAKE, KATIE LARSEN & LIESL SEBORG

ILEAD.MS.UTAH@GMAIL.COM